



On-line PICASSO PROJECT

**Comprehensive Catalogue Raisonné
Prof. Dr. Enrique Mallen**

1949



La femme au fauteuil (variante). Paris. 2-January~17-February/1949. Lithograph. 73,5 x 54,5 cm. Musée Picasso, Paris. Dation 1979.

OPP.49:334; M:154; MPP:3417

La femme au fauteuil (variante). Paris. 2-January~17-February/1949. Lithograph. 69,7 x 54,7 cm. Musée Picasso, Paris. Dation 1979.

OPP.49:335; M:154.B; MPP:3418





Femme au fauteuil IV (d'après le violet) (I.V). Paris. 3-January/1949. Lithograph on Arches paper, edition 50. [69,8 x 54,5] [70 x 54,7] 76,7 x 56,6 cm. Kunstmuseum Picasso, Münster. Also The Museum of Modern Art, NYC. Curt Valentin Bequest; Yale University Art Gallery. (Inv 1969.60.I). Gift of Mr. and Mrs. Walter Bareiss, B.S. 1940s; Museu Picasso, Barcelona. Gift of Jaume Sabartés, 1962.

OPP.49:125; B.I:588d; M:137.01.05B; MPB:70.116;
CH.97:69p; EC.16*:152; GB.14*:133; JR.12*:225p; SF.09*:24

Homards et poissons. Paris. 7-January/1949. Lithograph on wove paper. 74 x 103 [73,7 x 103,1; 75 x 105] cm. Kunstmuseum Picasso, Münster. (Inv 441.142). Also Museu Picasso, Barcelona. Gift by Jaume Sabartés. Christie's. #147, 1322, 04/28/03.

OPP.49:091; B.I:582; M:142;
MPB:70.220; BA.18*:277p; GB.14*:135;
MG.14*:1; MM.02*:157p; MS.24*:54





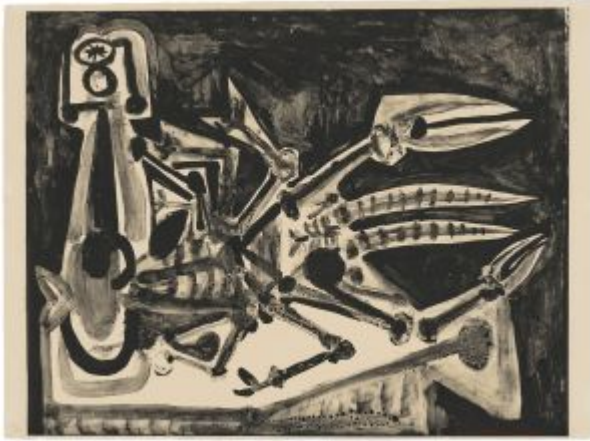
La table aux poissons (V). Paris. 7-January/1949. Lithograph. 56,8 x 76,4 cm. Musée Picasso, Paris. Dation 1979.

OPP.49:300; MPP:3411

La colombe. Paris. 9-January/1949. Lithograph on Arches, edition 50. 54,4 x 69,8 cm. Tate Modern, London. (Inv P11366). Bequeathed by Elly Kahnweiler 1991 to form part of the gift of Gustav and Elly Kahnweiler, accessioned 1994. Also Musée Picasso, Paris; Museu Picasso, Barcelona.

OPP.49:079; B.I:583; M:141;
MPB:70.106; MPP:3414; BA.19c*:166p;
BL.91:89p; BS.55:209; CH.04*:17;
CH.68a*:165; DG.87:62p; GA.14:32p;
GP.96:295p; HD.01:56; HJ.96:63p;
JF.96:152p; JL.71:17p; KB.01*:138;
LB.58:90p; NC.10:54; OW.13:145p;
PA.19d*:261; PC.77:406p; PD.65:198p;
PF.10*:42; RI.03b:209p; TO.04*:250;
TO.95b:73p; UP.00:938; WL.17*:21;
WS.93:42p; WW.91:476p



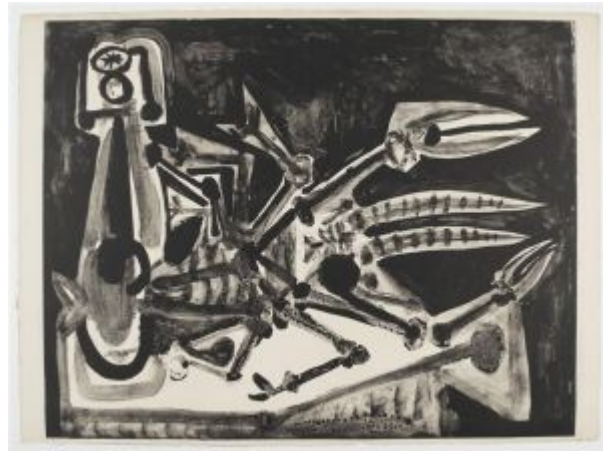


Le homard. Paris. 9-January/1949. Lithograph on wove paper. 54,6 x 69,8 cm. Museu Picasso, Barcelona. Gift by Jaume Sabartés. Also Christie's. #148, 1322, 04/28/03.

OPP.49:080; B.I:584; M:143.B; MPA:1981.6.8; MPB:70.104; BA.18*:276p; PM.10:91p

Le homard. Paris. 9-January/1949. Lithograph. 54,8 x 69,8 cm. Musée Picasso, Paris. Dation 1979.

OPP.49:332; M:143; MPP:3415





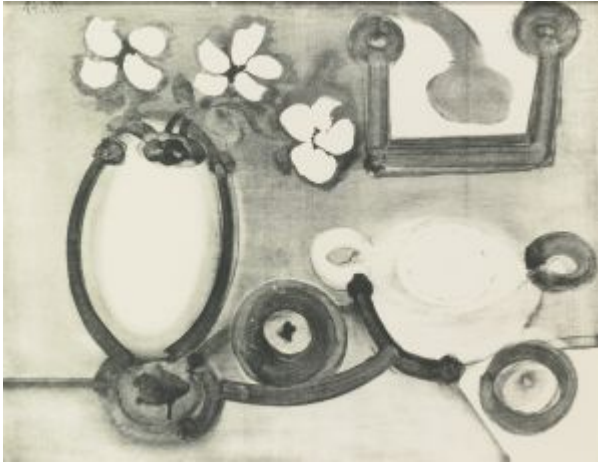
Tête de jeune fille I. Paris. 11-January/1949. Lithograph on Arches. 64 x 49,3 cm. Museo Picasso, Málaga. On temporary loan from Fundación Almine & Bernard Ruiz-Picasso para el Arte. Also Christie's. #150, 1322, 04/28/03.

OPP.49:081; M:145.01; NC.17*:114

Le crapaud. Paris. 13-January/1949. Lithograph on Arches. [49,5 x 64] 49,8 x 64,4 cm. Staatsgalerie Stuttgart. (Inv A 53/1500). Graphische Sammlung. Also Christie's. #149, 1322, 04/28/03.

OPP.49:098; B.I:585; M:144.B;
BS.55:424p; ED.07*:61; EM.55:233p;
FP.73:298p; GM.81*:229; JR.10*:73p;
LB.58:99p; MI.53*:276





Nature morte avec fleurs (I). Paris. 13-January/1949. Lithograph on Arches. 50,2 x 65,4 cm. Christie's. #153, 1322, 04/28/03.

OPP.49:101; M:146.01B

Le crapaud. Paris. 13-January/1949. Lithograph. 50 x 64,2 cm. Musée Picasso, Paris. Dation 1979.

OPP.49:333; M:144; MPP:3416





Nature morte au vase de fleurs. Paris. 13-January/1949. Lithograph. 49,6 x 64,5 cm. Musée Picasso, Paris. Dation 1979.

OPP.49:336; M:146; MPP:3441

La femme au fauteuil III. Paris. 13-January/1949. Lithograph on Arches wove paper. 66 x 50,3 cm. Sotheby's. #150, PF2396, 03/15/23.

OPP.49:345; M:136.05





Nature morte au vase de fleurs (II). Paris. 13~16-January/1949. Lithograph. 49,6 x 64,5 cm. Musée Picasso, Paris. Dation 1979.

OPP.49:337; M:146.02; MPP:3442

Tête de jeune fille. Paris. 16-January/1949. Lithograph on Arches. 39,6 x 29,6 cm. Christie's. #154, 1322, 04/28/03.

OPP.49:082; M:147





Jeune fille. Paris. 16-January/1949. Lithograph on Arches. 39,4 x 29,5 cm. Christie's. #155, 1322, 04/28/03.

OPP.49:083; M:148

Tête de faune. Vallauris. 29-January/1949. Painted & glazed ceramic plate. 29,5 cm. Sotheby's. #154, L11005, 02/09/11.

OPP.49:220





Tête de satyr. Vallauris. 30-January/1949. White earthenware ceramic plate with colored engobe and glaze. 34,8 cm. Christie's. #356, 17660, 11/12/19.

OPP.49:313

Tête de faune. Vallauris. 1-February/1949. Painted, partially glazed & incised ceramic with kiln element; shallow bowl. 35,5 cm. Sotheby's. #151, L15007, 06/25/15.

OPP.49:286; VA.04*:n/a



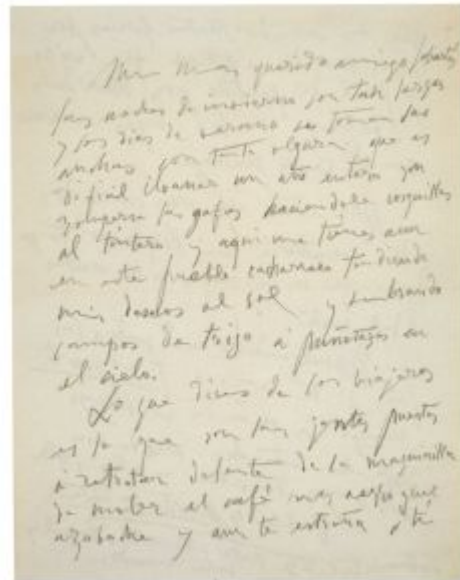


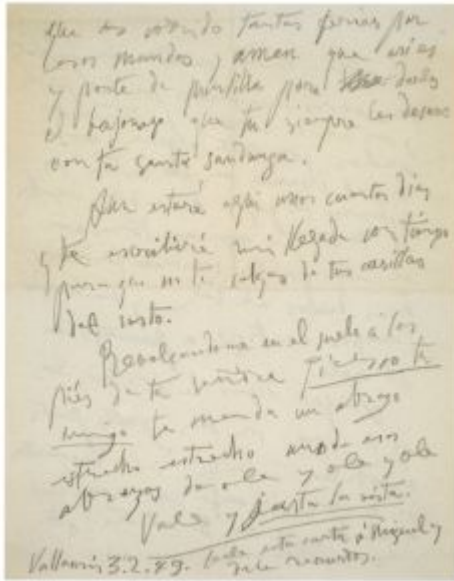
Tête de faune. Vallauris. 1-February/1949. Painted, incised & partially glazed ceramic shallow bowl with kiln element. 36,5 cm. Sotheby's. #669, L16005, 02/05/16. Formerly Marina Picasso Collection.

OPP.49:292

Lettre à Jaume Sabartés. Vallauris. 3-February/1949. Pencil on paper. 28,9 x 22,4 cm. Museu Picasso, Barcelona.

OPP.49:318; PP.19:273p





Lettre à Jaume Sabartés. Vallauris. 3-February/1949. Pencil on paper. 28,9 x 22,4 cm. Museu Picasso, Barcelona.

OPP.49:319; PP.19:274p

Tête de faune. Vallauris. 5-February/1949. White earthenware ceramic plate, decoration in engobes. 5 x 40,5 cm. Musée Picasso, Paris. Dation 1979.

OPP.49:184; MPP:3690; FF.05*:n/a; MP.85:457; PA.08b*:n/a





Tête de faune. Vallauris. 7-February/1949. White earthenware ceramic plate, decoration in engobes. 38,5 x 32,5 x 4 cm. Musée Picasso, Paris. Dation 1979.

OPP.49:150; MPP:3691; HS.98*:n/a; MP.85:458; PA.08b*:n/a; PA.79a*:n/a

Visage de femme. Vallauris. 8-February/1949. Glazed ceramic plate. 38,5 cm. Christie's. #0035, 5300, 10/25/07.

OPP.49:173; LO.84b*:4





Tête de faune. Vallauris. 8-February/1949.
Partially glazed ceramic plate. 38,4 cm. Christie's.
#1329, 3738, 05/15/15.

OPP.49:283; BS.90b*:34

La jeune artiste (I). Paris. 11-February/1949.
Lithograph. 39,3 x 29,8 cm. Christie's. #221, 9512,
10/31/00.

OPP.49:008; B.I:609.I; M:150.01; MF.10*:110p





La jeune artiste (II). Paris. 14-February/1949. Lithograph. 39,5 x 30 cm. Phillips. #39, NY030111, 06/08/11. Museu Picasso, Barcelona.

OPP.49:217; B.I:609.II; M:150.02; MPB:70.192; MF.10*:111p; TO.99*:96

Tête de femme. Paris. 16-February/1949. Lithograph on Arches. 39,5 x 30 cm. Christie's. #297, 9488, 10/24/02.

OPP.49:060; M:152





Portrait de jeune fille. Paris. 16-February/1949. Lithograph on Arches. 39,5 x 29,4 cm. Christie's. #158, 1322, 04/28/03.

OPP.49:077; M:151

Jeune femme. Paris. 17-February/1949. Lithograph on Arches. 39,9 x 29,8 cm. Christie's. #160, 1322, 04/28/03.

OPP.49:074; B.II:1836; M:153; JR.12:226p





Tête de jeune fille. Paris. 17-February/1949. Lithograph on Arches. 39,8 x 29,8 cm. Christie's. #162, 1322, 04/28/03.

OPP.49:084; M:155



Tête de jeune fille (II). Paris. 17-February/1949. Lithograph on wove paper. 39,7 x 29,5 cm. Christie's. #156, 1322, 04/28/03.

OPP.49:092; B.I:589; M:149.02



Buste de femme. Paris. 19-February/1949. Oil on canvas. 61 x 50 cm. Private collection.

OPP.49:027; PP.49:001; Z.XV:117

Femme nue sur fond bleu. [Paris]. [20] 19-February/1949. Oil on canvas. 130 x 97 cm. Fundación Almine & Bernard Ruiz-Picasso para el Arte.

OPP.49:031; PP.49:005; Z.XV:118; BS.55:213;
GA.00*:72; GS.03:2.15; JR.12*:87p; MG.03b*:62;
MI.01*:140; MI.53*:133





Femme assise sur cathédre brune, robe quadrillée grise et bleue, fenêtre noire. Paris. 20-February/1949. Oil on canvas. 130 x 97 cm. Private collection.

OPP.49:028; PP.49:002; Z.XV:119; JR.10*:77p; JR.12*:99p; MI.53*:132

Enfant dans sa voiture. Paris. 20-February/1949. Oil on canvas. 100 x 80,5 cm. Private collection.

OPP.49:029; PP.49:003; Z.XV:120; JR.10*:67p; JR.12*:121p





Femme assise. Paris. 20-February/1949. Oil on canvas. 116 x 89 cm. Sotheby's. #141, N07990, 05/06/04. Formerly Mr. and Mrs. Albert Neumann Collection, Chicago.

OPP.49:030; PP.49:004; Z.XV:123; CH.63*:n/a; CH.68a*:46; JR.12*:97p; MI.53*:137; NY.56b*:n/a; RO.53*:92

L'artiste et son enfant. Paris. 20-February/1949. Lithograph. 63 x 47 cm. Museu Picasso, Barcelona.

OPP.49:059; B.I:590; M:156; MF.10*:109p; TO.99*:95





Femme au fauteuil (Variante). Paris. [Late-February] [March]/1949. Lithograph transfer to zinc plate on Arches. 65 x 50 cm. Kunstmuseum Picasso, Münster. (Inv 459.154). Also Staatsgalerie Stuttgart. (Inv A 04/7279). Graphische Sammlung.

OPP.49:103; M:154.C; ED.07*:60; JR.12*:227p; MM.02*:207p

Buste de jeune fille (I). Paris. 26-February/1949. Lithograph on Arches. 63,5 x 48,9 cm. Christie's. #165, 1322, 04/28/03.

OPP.49:104; M:158.01





Portrait de jeune femme. Paris. 26-February/1949.
Lithograph enhanced with oil. 65,5 x 50 cm. Sotheby's. #27,
PF2216, 10/25/22.

OPP.49:341

Buste de jeune femme. Paris. 26-February/1949.
Lithograph. 65,4 x 49,5 cm. Phillips. #111, UK030323,
09/21-22/23.

OPP.49:352; M:158.02





Femme assise. Paris. 28-February/1949. Oil on canvas. [130 x 97] 129,8 x 96,5 cm. Sotheby's. #21, N09860, 05/14/18.

OPP.49:032; PP.49:006; Z.XV:122; LO.87a*:10; LO.88d*:36

Buste de femme. Paris. 28-February/1949. Oil on canvas. 41,4 x 33,3 cm. University of Michigan Museum of Art, Ann Arbor, MI. (Inv 1994/1.68). Gift of The Carey Walker Foundation. Formerly Dr. Herschel Carey Walker Collection, NY.

OPP.49:033; PP.49:007; Z.XV:139; EG.66*:19p; JR.12*:95p; PD.65:201p





Tête de femme. Paris. 28-February/1949. Oil on canvas [Oic]. 41 x 33,5 cm. Sotheby's. #65, 06/28/88.

OPP.49:034; PP.49:007a; Z.XV:150

Tête de femme. Paris. 28-February/1949. Oil on canvas. 41,5 x 27 cm. Kunsthalle Bremen.

OPP.49:265; PP.49:032; Z.XV:151; GB.14*:76;
RM.07*:56p; RP.67a:29





Claude à deux ans dans sa petite voiture. Paris. 1-March/1949. Oil on canvas [OïC]. 130 x 97 cm. Private collection.

OPP.49:035; PP.49:008; Z.XV:121; HK.65:126p; MI.53*:139; WS.94:90p

Femme en rouge. Paris. 1-March/1949. Oil on canvas. 130 x 97 cm. Marina Picasso Collection. (Inv 13176). Courtesy Galerie Jan Krugier, Geneva.

OPP.49:036; PP.49:009; Z.XV:125; MP.81*:241





Poèmes (Iliadz, Poésie de mots inconnus). Paris. [End-February] [Early-March]/1949. Burin & lithograph. 25,3 x 18,7 cm. Yale University Art Gallery. (Inv 1958.52.160). The Ernest C. Steefel Collection of Graphic Art. Gift of Ernest C. Steefel. Also Christie's. #136, 5059, 04/29/04.

OPP.49:152; B.I:631; Ba:839.B; GC:54.01.B; SF.09:22c

La petite colombe. Paris. March/1949. Lithograph on wove paper. [26,4 x 20,6] 26 x 20,5 cm. Christie's. #180, 1322, 04/28/03.

OPP.49:073; B.I:600; GC:49.2; M:174; FC.00*:90; GM.81*:232; PF.10*:44





Petite colombe. Paris. March/1949. Lithograph on wove paper. 25,4 x 20,3 cm. Christie's. #179, 1322, 04/28/03.

OPP.49:087; M:173

La figure avec des rayons. Paris. 4-March/1949. Lithograph, wash & gouache on Arches. 66,5 x 50,8 cm. Christie's. #172, 6683, 10/09/02.

OPP.49:063; JR.12*:230p; MP.00:472





Figure. Paris. 4-March/1949. Lithograph. 65 x 50 cm. Christie's. #169, 1322, 04/28/03.

OPP.49:065; B.I:593; M:162

Buste blanc sur fond noir. Paris. 4-March/1949. Lithograph on Arches. 59,5 x 44,3 cm. Christie's. #168, 1322, 04/28/03. Also Mr. & Mrs. Mitchell Miller Collection.

OPP.49:085; B.I:592; M:161; WC.62*:32





Jeune fille au corsage rayé (II). Paris. 4-March/1949.
Lithograph on Arches. 64 x 49,4 cm. Museo Picasso, Málaga.
Donación de Christine Ruiz-Picasso. Also Christie's. #164, 1322,
04/28/03.

OPP.49:099; M:157.02; MPM:1.103; JR.12:94p; MG.13*:113p

Figure avec rayons. Paris. 4-March/1949. Lithograph.
65,2 x 49,6 cm. Sotheby's. #81, N10447, 10/22/20.

OPP.49:325; M:162.A





Visages (Fernand Mourlot, Picasso Lithographe I). Paris. 5-March/1949. Lithograph on wove paper. [49,5 x 65,2] 31,9 x 51,2 cm. Christie's. #38, 6683, 10/09/02. Also Yale University Art Gallery. (Inv 1983.1.24).

OPP.49:062; B.I:591; GC:55.1; M:160; GM.81*:231; SF.09:197p

Visage. Paris. 5-March/1949. Lithograph on wove paper [Alternate version of *Visages (Fernand Mourlot, Picasso Lithographe I)*]. 31,9 x 51,2 cm. The Museum of Modern Art, NYC. (Inv 994.1964.A2). The Louis E. Stern Collection.

OPP.49:311





Visage. Paris. 5-March/1949. Lithograph on wove paper [Alternate version of *Visages* (Fernand Mourlot, Picasso *Lithographe I*)]. 31,9 x 51,2 cm. The Museum of Modern Art, NYC. (Inv 994.1964.A). The Louis E. Stern Collection.

OPP.49:312

Buste de femme dans un fauteuil. Paris. 6-March/1949. Oil on canvas. 65 x 54 cm. Private collection.

OPP.49:037; PP.49:010; Z.XV:124; JR.10*:75p





Projet pour couverture de livre. Paris. 6-March/1949. Lithograph on Arches. 53,5 x 69,8 cm. Christie's. #166, 1322, 04/28/03.

OPP.49:075; M:159

Femme au fauteuil (Françoise). Paris. 7-March/1949. Oil on canvas. [60,7] 61 x 50,2 cm. Christie's. #616, 8054, 02/09/12. Formerly Christie's. #55, 06/25/90.

OPP.49:038; PP.49:010a





Le corsage à carreaux. Paris. 7~26-March/1949. Lithograph. 64,8 x 49,8 cm. Musée Picasso, Paris. Dation 1979.

OPP.49:090; M:175; MPP:3445

Figure composée (I). Paris. 8-March/1949. Lithograph on Arches. 65,3 x 49,7 cm. Christie's. #173, 1322, 04/28/03.

OPP.49:076; B.I:596; Ba:569; M:165.B; GP.96:294p; JR.12:88p





Figure composée (II). Paris. 8-March/1949. Lithograph on Arches, edition 50. 65,6 x 49,7 cm. Werner-Coninx-Stiftung, Zürich. Also Christie's. #174, 1322, 04/28/04.

OPP.49:086; B.I:597; M:166.B; JR.12:88p; MD.02*:262p

Buste modern style. Paris. 8-March/1949. Lithograph, wash & gouache on Arches. 64,4 x 49,8 cm. Christie's. #172, 1322, 04/28/03.

OPP.49:096; B.I:595; M:164; JR.12*:231p





Figure composée (I). Paris. 8-March/1949. Lithograph. 64,9 x 49,5 cm. Musée Picasso, Paris. Dation 1979.

OPP.49:338; M:165; MPP:3443



Figure composée (II). Paris. 8-March/1949. Lithograph. 63 x 49,5 cm. Musée Picasso, Paris. Dation 1979.

OPP.49:339; M:166; MPP:3444



La femme à la résille (II). Paris. 8-March/1949~September/1956. Lithograph. 65,4 x 50 cm. Musée Picasso, Paris. Dation 1979.

OPP.49:233; M:178.02.B; MPP:3451

Tête de jeune fille II. Paris. 9-March/1949. Lithograph. 65,4 x 49,9 cm. Museo Picasso, Málaga. Acquisition 2010. Also Christie's. #220, 9512, 10/31/00.

OPP.49:007; M:145.02; MPM:3.41; DP.20*:147; NC.17*:115





Femme assise. Paris. 9-March/1949. Oil on canvas [OiC]. 130 x 97 cm. Private collection.

OPP.49:039; PP.49:011; Z.XV:126

Tête de jeune fille III. Paris. 9-March/1949.
Lithograph on Arches wove paper, 49,5 x 64 cm. Museo
Picasso, Málaga. On temporary loan from Fundación
Almine & Bernard Ruiz-Picasso para el Arte. Also
Christie's. #30, 18378, 09/10-22/20.

OPP.49:324; M:145.03; DP.20*:148





La grande corrida (I). Paris. 10-March/1949.
Lithograph in black & olive-green on Arches paper,
edition 50. 53,8 x 67,5 cm. Christie's. #176, 1322,
04/28/03.

OPP.49:106; B.I:598; M:168; PA.20j*:28

Corrida (Le picador). Paris. 11~15-
March/1949. Lithograph on Arches. 56,8 x
76,2 cm. Christie's. #178, 1322, 04/28/03.
Also Museu Picasso, Barcelona.

OPP.49:078; B.I:599; M:172;
MPB:70.111; JR.10*:130p; LA.07*:n/a;
MG.10a*:36





Femme assise à la rose bleue. Paris. 13-March/1949. Oil on canvas. 55,3 x 45,1 cm. Sotheby's. #41, N07838, 05/11/02. Formerly Marina Picasso Collection. (Inv 13182).

OPP.49:001; JR.12*:91p



Femme en bleu. Paris. 13-March/1949. Oil on canvas. [100 x 81] 99,7 x 80,7 cm. Fogg Art Museum, Harvard University, Cambridge, MA. (Inv 1959.151). Gift of Mr. and Mrs. Joseph Pulitzer, Jr.

OPP.49:040; PP.49:012; Z.XV:127; BS.55:211; NY.51d*:35; NY.52a*:10; TK.99b*:n/a



Femme assise. Paris. [1948] 13-March/1949. Oil on canvas [OIC]. 130 x 97 cm. Private collection.

OPP.49:041; PP.49:013; Z.XV:129; BS.55:206; MI.53*:136

Femme dans un fauteuil (Françoise). Paris. 14-March/1949. Oil on canvas. 116 x 89 cm. Private collection.

OPP.49:002; PP.49:014; Z.XV:128; MM.02:206p; MM.85a*:37; WR.96:429p





Jeune femme à la robe rayée. Paris. 15-March/1949. Oil on canvas. [130 x 97] 115,9 x 88,9 cm. Los Angeles County Museum of Art. (Inv M.67.25.12). David E. Bright Bequest.

OPP.49:042; PP.49:015; Z.XV:131



Jeune fille dans un fauteuil. Paris. 16-March/1949. Oil on canvas. 41,6 x 27,6 cm. Sotheby's. #401, 7050, 11/13/97.

OPP.49:043; PP.49:016; Z.XV:149



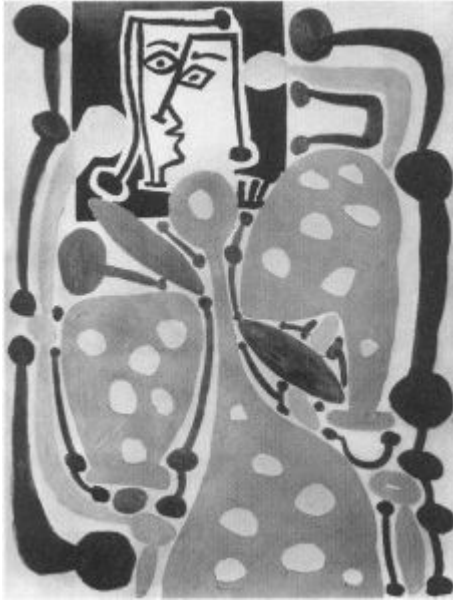
Tête de jeune fille IV. Paris. 16-March/1949. Lithograph on Arches. 64,1 x 49,5 cm. Christie's. #152, 1322, 04/28/03.

OPP.49:100; M:145.04

Aimé Césaire, Corps Perdu L004 (Couple I). Paris. 17-March/1949. Aquatint on handmade paper, edition 219. [41,1 x 30,1] 40,7 x 30,6 cm. Christie's. #538, 1226, 04/29/03. Also Fine Arts Museums of San Francisco. (Inv 1999.165.4.4).

OPP.49:170; B.I:635; Ba:843; GC:56.04; GM.81*:252





Femme assise. Paris. 18-March/1949. Oil on canvas [OIC].
116,2 x 88,9 cm. Sotheby's. #29, 11/12/97.

OPP.49:044; PP.49:017; Z.XV:132; DK.61*:36



Femme assise. Paris. 18-March/1949. Oil on canvas
[OIC]. 130 x 97 cm. The Bellagio Gallery of Fine Art, Las
Vegas.

OPP.49:045; PP.49:018; Z.XV:133; BG.99:144p



Femme assise. Paris. 19-March/1949. Oil on canvas. [116 x 89] 115,6 x 89,5 cm. Private collection. Bill Lowe Gallery, Atlanta. 2017; Christie's. #11, 5465, 06/20/12.

OPP.49:046; PP.49:019; Z.XV:130; PA.49b*:n/a

Tête de femme. Paris. [Spring]/1949. Oil on canvas [Oic]. 22 x 16 cm. Private collection.

OPP.49:057; PP.49:031; Z.XV:148; CH.68a*:47





La grande corrida (II). Paris. [10] 21-March/1949. Lithograph in black & olive-green on Arches paper, edition 5. 55,5 x 68 cm. Sotheby's. #273, L00119, 06/21/00. Also Museu Picasso, Barcelona.

OPP.49:025; M:169; MPB:70.101; DC.87:400; MG.10a*:35

Buste de femme II (Françoise). Paris. 21-March/1949. Oil on canvas [OiC]. 61 x 38 cm. Private collection. Formerly Heinz Berggruen Collection.

OPP.49:047; PP.49:021; Z.XV:138; RP.60*:182





Buste de femme. Paris. 21-March/1949. Oil on canvas [OïC].
61 x 50 cm. Private collection.

OPP.49:058; PP.49:020; Z.XV:136; MM.02:12p

Femme en bleu assise dans un fauteuil (Françoise). Paris. 23-March/1949. Oil on canvas. 116 x 89 cm. Private collection, New York.

OPP.49:003; PP.49:023; Z.XV:141; GL.89*:17;
MM.07*:108; MM.85a*:38; WR.96:408p





Femme assise (Françoise). Paris. 23-March/1949. Oil on canvas. 100 x 81 cm. The Israel Museum, Jerusalem. (Inv B67.0790). Gift of Alex Maguy, Paris.

OPP.49:048; PP.49:022; Z.XV:140; JA.09*:191p;
JR.16*:n/a; MI.53*:135; MJ.55*:116



Fille en bleu, de face. Paris. 23-March/1949. Oil on canvas. 100 x 81 cm. Private collection.

OPP.49:050; PP.49:025; Z.XV:142; JR.10*:79p;
JR.12*:89p



Buste de femme. Paris. 24-March/1949. Oil on canvas [Oic]. 61 x 50 cm. Private collection.

OPP.49:049; PP.49:024; Z.XV:137

Dessin. Paris. 24-March/1949. Ink on Les lettres françaises n°252 [After *La colombe*]. 60 x 42,5 cm. Musée Picasso, Paris. (Inv 515AP/H/50/1).

OPP.49:302





Femme assise. Paris. 26-March/1949. Oil on canvas [OIC].
100 x 81 cm. Private collection.

OPP.49:051; PP.49:026; Z.XV:147

Le corsage à carreaux. Paris. 26-March/1949.
Lithograph in colors on Arches. 65,1 x 50,2 cm. Musée
Picasso, Antibes. Also Christie's. #181, 1322, 04/28/03.

OPP.49:094; M:175.B; JA.09*:188p





Le corsage à carreaux. Paris. 26-March/1949. Lithograph on Arches. 64,7 x 49,5 cm. Christie's. #182, 1322, 04/28/03.

OPP.49:095; M:175.A; MPA:1981.6.9

Jeune fille inspirée par Cranach. Paris. 26~27-March/1949. Lithograph with ochre on Arches. 64 x 49,5 cm. Christie's. #183, 1322, 04/28/03. Also Mr. and Mrs. Joseph R. Shapiro Collection, Chicago.

OPP.49:107; B.I:602; M:176; CH.68a*:169; GP.96:294p; LW.15*:218p





Jeune fille (d'après Cranach). Paris. 26~27-March/1949.
Lithograph, edition 50. 64,5 x 50 cm. Sotheby's. #168,
N08632, 04/29/10.

OPP.49:212; B.I:603; M:176.a; MD.02*:371p

Buste de jeune fille (d'après Cranach). Paris.
[26~27-March]/1949. Lithograph. 65 x 50 cm. Private
collection.

OPP.49:258; GL.89*:18





Femme assise. Paris. 27-March/1949. Oil on canvas. 130 x 97 cm. Private collection.

OPP.49:052; PP.49:027; Z.XV:143; BO.00*:27; MM.02:34p

Femme aux cheveux verts (a.Ia) (La femme à la résille). Paris. 28-March/1949. Lithograph on Arches. 65,3 x 50,8 cm. Christie's. #185, 1322, 04/28/03.

OPP.49:109; M:178.a.01aC; GM.00:493





Femme aux cheveux verts (a.Id) (La femme à la résille). Paris. 28-March/1949. Lithograph in colors on Arches, edition 50. 63,8 x 49,9 cm. Chazen Museum of Art, University of Wisconsin-Madison. Bequest of Alexander and Henrietta W. Hollaender. (Inv 1992.318). Also Christie's. #162, 1428, 11/02/04.

OPP.49:121; B.I:612; M:178.a.01e; GM.00:496; VO.16*:121p



Femme aux cheveux verts. Paris. 28-March/1949. Lithograph. 64 x 50,2 cm. Musée Picasso, Paris. Dation 1979.

OPP.49:157; M:178.a.01a; MPP:3446



Femme aux cheveux verts. Paris. 28-March/1949.
Lithograph. 65 x 50 cm. Musée Picasso, Paris. Dation 1979.

OPP.49:183; M:178.a.01aB; MPP:3447

Femme au tablier. Paris. 28-March/1949. Oil over
lithograph on paper. [66 x 50,5] 65,5 x 50 cm. Private
collection. Formerly Galerie Utermann; Sotheby's. #20,
L19006A, 06/19/19.

OPP.49:218; GL.81*:32





Femme aux cheveux verts (a.Ic) (La femme à la résille). Paris. [28-March]/1949. Lithograph printed in colors. 65,1 x 50 cm. Christie's. #86, 7958, 03/29/11.

OPP.49:224; M:178.a.01c

Femme aux cheveux verts. Paris. 28-March/1949. Lithograph. 65,6 x 50,1 cm. Musée Picasso, Paris. Dation 1979.

OPP.49:245; M:178.a.01d; MPP:3448



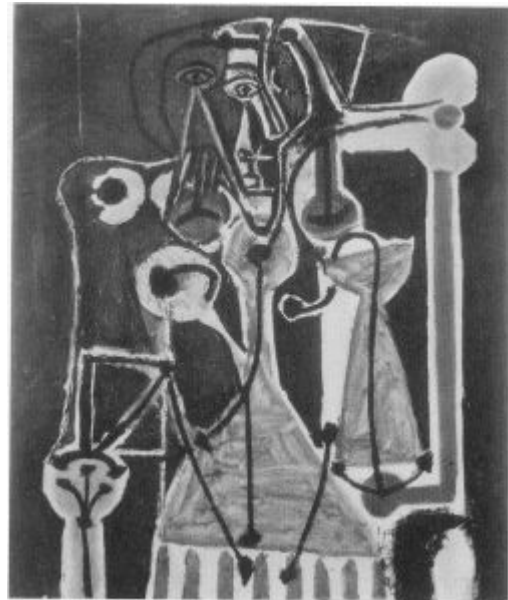


Femme aux cheveux verts (III). Paris. 28-March~30-May/1949. Lithograph. 65,9 x 50 cm. Musée Picasso, Paris. Dation 1979.

OPP.49:215; M:178.03; MPP:3450

Femme assise. Paris. 29-March/1949. Oil on canvas [OiC]. 61 x 50 cm. Mr. and Mrs. Joseph Kriegler Collection.

OPP.49:054; PP.49:028; Z.XV:134; EG.66*:29p





Femme assise. Paris. 29-March/1949. Oil on canvas. [61] cm. Helly Nahmad Collection, Monaco/London. Formerly Opera Gallery. 2011.

OPP.49:055; PP.49:029; Z.XV:135; HN.13*:175p

Femme assise. Paris. 29-March/1949. Oil on canvas [Oic]. 130 x 97 cm. The Bellagio Gallery of Fine Art, Las Vegas.

OPP.49:056; PP.49:030; Z.XV:146; BG.99:148p; MI.53*:134



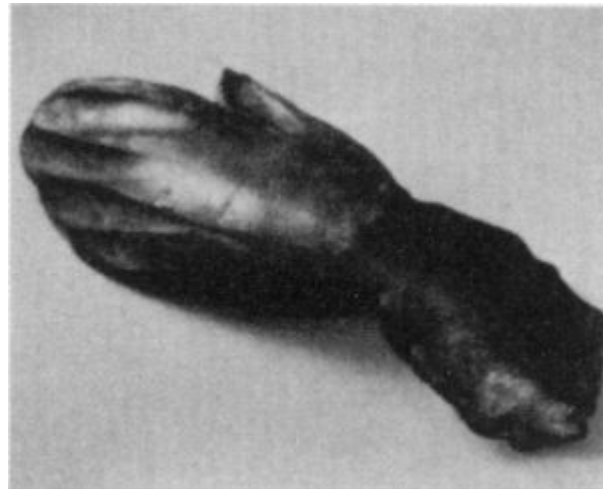


La grande corrida (III). Paris. 31-March/1949.
Lithograph in black on Arches paper, edition 50.
53,8 x 67,5 cm. Christie's. #176, 1322.

OPP.49:214; M:170

Main. Paris. [April]/1949. Bronze. 26 x 4,5
cm. Private collection.

OPP.49:102; PP.49:035*; WS:340





Carte de presse (Congrès Mondial des Partisans de la Paix). Paris. Second-Quarter/1949. Letterpress on cardboard [After *La colombe*]. 10,5 x 13,3 cm. Dr. Stephan Handy Collection.

OPP.49:350

Figure au corsage rayé. Paris. 3-April/1949. Lithograph in six colors: yellow, green, red, bistre, violet, black on stones; wash drawing on paper transferred to stone edition 50. [64,9 x 49,7] 65,3 x 50,5 cm. Kunstmuseum Picasso, Münster. (Inv 503.179). Also Sotheby's. #287, N07888, 05/02/03; Morton G. Neumann Family Collection, Chicago.

OPP.49:021; B.I:604; M:179; CH.68a*:170; LB.58:89p; MM.02*:181p





Poèmes et lithographies L001. Cannes. 6-April/1949 (published 1954). Ink, pen, wash drawing, litho crayon & gouache on cut transfer papers, edition 50. 50 x 65 cm. Sotheby's. #95, N08585, 10/29/09.

OPP.49:135; B.I:615; GC:69.01; M:180.a; BA.22:52p; BP.21:381p; CW.89:279p; EM.55:255p; GM.81*:235; GU.00:133; PA.19d:147p; WC.62*:56

Poèmes et lithographies L010. Cannes. 6-April/1949 (published 1954). Ink, pen, wash drawing, litho crayon & gouache on cut transfer papers, edition 50. 50 x 65 cm. The Museum of Modern Art, NYC. (Inv 1006.1964.10). The Louis E. Stern Collection.

OPP.49:144; B.I:624; GC:69.10; M:180.j; BA.22*:53p; GM.81*:244; WC.62*:56





Poèmes et lithographies L002. Cannes. 6-April ~ 13-May/1949 (published 1954). Ink, pen, wash drawing, litho crayon & gouache on cut transfer papers, edition 50. 50 x 65 cm. The Museum of Modern Art, NYC. (Inv 1006.1964.2). The Louis E. Stern Collection.

OPP.49:136; B.I:616; GC:69.02; M:180.b; BA.12b*:214p; BA.22:52p; GM.81*:236; WC.62*:56

Poèmes et lithographies L013. Cannes. 6-April~29-May/1949 (published 1954). Ink, pen, wash drawing, litho crayon & gouache on cut transfer papers, edition 50. [50 x 65] 64,5 x 49,9 cm. Musée Picasso, Paris. Also Museu Picasso, Barcelona. Adquisición 1984.

OPP.49:147; B.I:627; GC:69.13; M:180.m; MPB:112.708.13; MPP:1988.08; AM.08:99p; BA.12b*:215p; BA.22*:n/a; BA.23*:156p; BP.21:390p; CW.89:286p; GM.81*:247; HK.65:129p; PA.19d:148p; PD.06*:192p; PP.19:233p; WC.62*:56; WR.80:351p





Buste au fond étoilé (I). Paris. 7-April/1949. Lithograph on wove paper, edition 50. [64 x 49,5] 65,5 x 49,4 cm. Mildred Lane Kemper Art Museum (Washington University, St. Louis). Gift of Alvin S. Novack, 1962. Also Christie's. #242, 6399, 12/05/00.

OPP.49:010; B.I:594; M:163.01; MI.53*:278; VO.16*:122p

Buste au fond étoilé (II). Paris. 7-April/1949. Lithograph in blue on Arches/wove paper. 64,1 x 49,5 cm. Christie's. #171, 1322, 04/28/03.

OPP.49:105; M:163.02





Yvan Goll, *Élégie d'Ihpetonga suivi des masques de cendre 001 (Masque noir)*. Paris. 11-April/1949. Lithograph. 30.48 x 43.18 cm. Christie's. #120, 1481, 02/08/05. Also Fine Arts Museums of San Francisco. (Inv 1999.165.32.1).

OPP.49:026; B.I:605; GC:53.1; GC:70.1; M:177.02; MPP:1990.383.1

Yvan Goll, *Élégie d'Ihpetonga suivi des masques de cendre 004 (Masque féminine)*. Paris. 11-April/1949. Lithograph on wove paper. 29,5 x 20,3 cm. Christie's. #184, 1322, 04/28/03. Also Fine Arts Museums of San Francisco. (Inv 1999.165.32.2).

OPP.49:108; B.I:608; GC:53.4; GC:70.2; M:177.04; MPP:1990.383.4; LM.06*:15; PM.10:77p





Yvan Goll, Élégie d'Ihpetonga suivi des masques de cendre 003 (Masque démoniaque).

Vallauris. 11-April/1949. Lithograph on transfer paper printed on hand-made Fabriano laid paper. 32,8 x 25,2 cm. Fine Arts Museums of San Francisco. (Inv 1999.165.32.3). Gift of the Reva & David Logan Foundation.

OPP.49:210; B.I:607; GC:53.3; GC:70.3; M:177.01; MPP:1990.383.3; PM.10:76p

Yvan Goll, Élégie d'Ihpetonga suivi des masques de cendre 002 (Masque noir avec des cornes).

Vallauris. 11-April/1949. Lithograph on transfer paper printed on hand-made Fabriano laid paper. 32,8 x 25,2 cm. Fine Arts Museums of San Francisco. (Inv 1999.165.32.4). Gift of the Reva & David Logan Foundation.

OPP.49:211; B.I:606; GC:53.2; GC:70.4; M:177.03; MPP:1990.383.2





Masque noir (pour Yvan Goll, Élégie d'Ihpetonga suivi des masques de cendre). Paris. [11-April/]1949. Transfer lithograph. 32 x 25 cm. The Museum of Modern Art, NYC. (Inv 991.1964.1-8). The Louis E. Stern Collection.

OPP.49:221

David et Bethsabée (d'après Cranach) (XI). Paris. Post-17-April/1949. Lithograph. 70,3 x 50 cm. Private collection.

OPP.49:267; M:109.11; GM.00:212





Femme aux cheveux verts (a.II) (La femme à la résille). Paris. 18-April/1949. Lithograph on Arches wove paper. [66 x 48,3] 66 x 55 cm. Musée Picasso, Antibes.

OPP.49:053; M:178.a.02; MPA:1981.6.10; PP.49:027a;
GM.00:498

Femme aux cheveux verts (II). Paris. 18-April/1949. Lithograph. 65,3 x 50,5 cm. Musée Picasso, Paris. Dation 1979.

OPP.49:234; M:178.02; MPP:3449



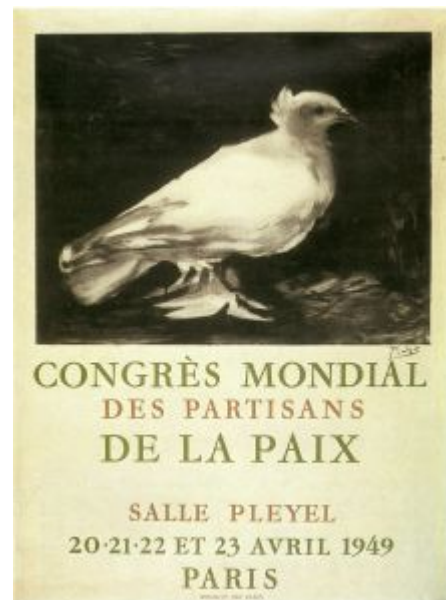


Affiche du Congrès Mondial des Partisans de la Paix. Paris. 20~23-April/1949. Photo lithograph [Autographed version of *Affiche du Congrès Mondial des Partisans de la Paix*]. 59 x 39 cm. Musée Picasso, Antibes.

OPP.49:264; GU.00:79

Affiche du Congrès Mondial des Partisans de la Paix. Paris. 23-April/1949. Photo lithograph [After *La colombe*]. 59,7 x 40,3 cm. Kunstmuseum Heidenheim. (Inv C.68). Also Christie's. #24, 1064, 01/27/11; Collection Gérard Gosselin.

OPP.49:134; BF.14:20p; GB.14:261p; IW.93:64p; JB.65:101; JR.09:245p; LU.93:391; LW.15:196p; LZ.06:19; MG.00:82p; MM.02*:211p; PA.19d*:262; PF.10*:45; RI.03a:22; SG.06:33p; TO.04*:251; WW.73:132p



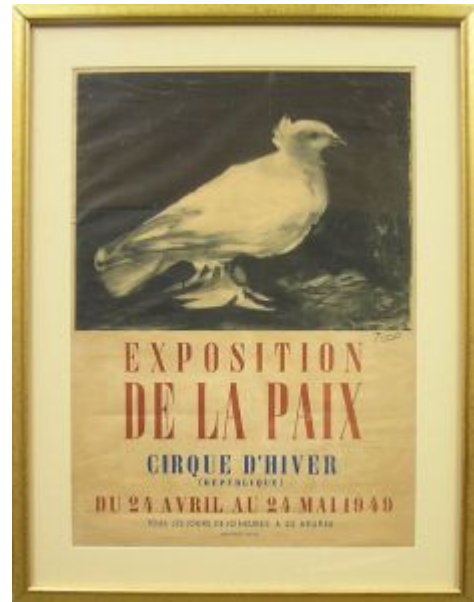


Salut de la population parisienne (Congrès mondial des partisans de la paix). Paris. 24-April/1949. Offset print on paper badge [After *La colombe*]. 5 x 5 cm. Dr. Stephan Handy Collection.

OPP.49:273

Affiche de l'Exposition de la Paix. Paris. 24-April~24-May/1949. Poster [After *La colombe*]. 76,2 x 53,3 cm. Private collection, Barcelona.

OPP.49:261; TO.04*:252



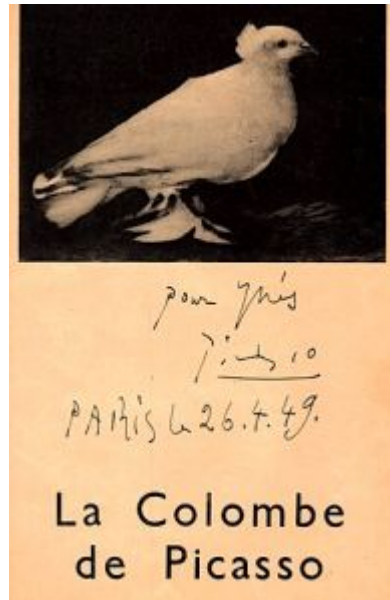


Signature dans un Menu. Paris. 25-April/1949.
Ink on paper. 6,25 x 9,5 cm. RRAuction. 01/18/12.

OPP.49:275

La colombe de Picasso (Pour Inés). Paris. 26-April/1949.
Ink on print. S/U. Artcurial. #288, 1331, 10/22/07.

OPP.49:181





Prosper Mérimée, Louis Aragon, Le Carmen des Carmen L03 (Torero). Paris. 30-April/1949. Lithograph on Arches paper, edition 30. 40,5 x 30,5 cm. Sotheby's. #173, L02195, 12/05/02. Also Museu Picasso, Barcelona.

OPP.49:068; B.I:1001; Ba:874; GC:126.3; MPB:113.015; PA.07a*:39p

Prosper Mérimée, Louis Aragon, Le Carmen des Carmen L02 (Picador et taureau). Paris. 30-April/1949. Aquatint on Arches paper, edition 30. 41 x 31 cm. Sotheby's. #172, L02195, 12/05/02. Also Museu Picasso, Barcelona.

OPP.49:070; B.I:1002; Ba:873; GC:126.2; MPB:113.017; BM.18:270p; MU.07b*:n/a; PA.07a*:37p





Prosper Mérimée, Louis Aragon, Le Carmen des Carmen L04 (Femme a la mantille avec une fleur: Carmen). Paris. 30-April/1949. Sugarlift & aquatint, edition 245. 40,6 x 30,5 cm. Leslie Sacks Fine Art. 2005.

OPP.49:126; B.I:1004; Ba:875; GC:126.4

Prosper Mérimée, Louis Aragon, Le Carmen des Carmen L01 (Femme à la mantille). Paris. 30-April/1949. Aquatint, edition 275. 36,5 x 27 cm. Christie's. #251, 7096, 11/29/05. Also Museu Picasso, Barcelona.

OPP.49:163; B.I:1003; Ba:872; GC:126.1; MPB:113.016





Femme a la mantille avec une fleur: Carmen. Paris. 30-April/1949. Sugarlift & aquatint with green color touches [After Prosper Mérimée, *Louis Aragon, Le Carmen des Carmen L04 (Femme a la mantille avec une fleur: Carmen)*]. 40,6 x 30,5 cm. Private collection.

OPP.49:293

Prosper Mérimée, Carmen L041 Dans L'arène: la pique). Paris. 2-May/1949. Aquatint on Montval. 34,7 x 27,6 cm. Sotheby's. #336, PF6025, 10/11/06.

OPP.49:119; B.I:570; Ba:837.Bd; GC:52.41; GM.81*:227





Prosper Mérimée, Carmen L042 (Le torero Escamillo). Paris. 2-May/1949. Aquarel sur Montval. 34,7 x 27,5 cm. Sotheby's. #337, PF6025, 10/11/06.

OPP.49:155; B.I:569; Ba:838; GC:52.42; CN.56*:19; GM.81*:228; LV.06*:n/a

Prosper Mérimée, Carmen L039 (Carmen, de profil). Paris. 2-May/1949. Sugarlift aquarel, édition 11. 48,5 x 34,3 cm. Leslie Sacks Fine Art. 2005.

OPP.49:127; B.I:572; Ba:835; GC:52.39; GM.81*:225





Prosper Mérimée, Carmen L040 (Carmen de trois-quarts).
Paris. 2-May/1949. Aquatint on Montval. 36 x 26 cm. Sotheby's.
#335, PF6025, 10/11/06.

OPP.49:131; B.I:571; Ba:836; GC:52.40; GM.81*:226

David et Bethsabée (d'après Cranach) (VII).
Paris. 9-May/1949. Lithograph. 71 x 55 x 6,5 cm.
Musée Picasso, Paris. Dation 1979.

OPP.49:113; MPP:3546





Poèmes et lithographies L003. Cannes. 13-May/1949 (published 1954). Ink, pen, wash drawing, litho crayon & gouache on cut transfer papers, edition 50. 50 x 65 cm. The Museum of Modern Art, NYC. (Inv 1006.1964.3). The Louis E. Stern Collection.

OPP.49:137; B.I:617; GC:69.03; M:180.c; BA.12b*:215p; BA.22:52p; GM.81*:237; WC.62*:56

Poèmes et lithographies L008. Cannes. 13-May/1949 (published 1954). Ink, pen, wash drawing, litho crayon & gouache on cut transfer papers, edition 50. 50 x 65 cm. The Museum of Modern Art, NYC. (Inv 1006.1964.8). The Louis E. Stern Collection.

OPP.49:142; B.I:622; GC:69.08; M:180.h; AM.08:97p; BA.22*:52p; GM.81*:242; WC.62*:56





Poèmes et lithographies L009. Cannes. 13-May/1949 (published 1954). Ink, pen, wash drawing, litho crayon & gouache on cut transfer papers, edition 50. [49,7] 50 x 65 cm. Christie's. #166, 1428, 11/02/04.

OPP.49:143; B.I:623; GC:69.09; M:180.i; AM.08:98p; BA.22:52p; CN.56*:14; GM.81*:243; PD.65:199p; WC.62*:56

Plantes tropicales. Paris. 15-May/1949. Lithograph on Arches. 62,1 x 47,4 cm. Christie's. #192, 1322, 04/28/03.

OPP.49:088; B.I:611; M:185





Poèmes et lithographies L006. Cannes. 15~16-May/1949 (published 1954). Ink, pen, wash drawing, litho crayon & gouache on cut transfer papers, edition 50. 50 x 65 cm. The Museum of Modern Art, NYC. (Inv 1006.1964.6). The Louis E. Stern Collection.

OPP.49:140; B.I:620; GC:69.06; M:180.f; AM.08:96p; BA.22:53p; BP.21:385p; CW.89:285p; GM.81*:240; WC.62*:56

Poèmes et lithographies L004. Cannes. 16-May/1949 (published 1954). Ink, pen, wash drawing, litho crayon & gouache on cut transfer papers, edition 50. [49,7 x 64,3] 50 x 65 cm. Christie's. #187, 1322, 04/28/03.

OPP.49:138; B.I:618; GC:69.04; M:180.d; BA.22:53p; GM.81*:238; WC.62*:56





Poèmes et lithographies L005. Cannes. 16-May/1949 (published 1954). Ink, pen, wash drawing, litho crayon & gouache on cut transfer papers, edition 50. 50 x 65 cm. The Museum of Modern Art, NYC. (Inv 1006.1964.5). The Louis E. Stern Collection.

OPP.49:139; B.I:619; GC:69.05; M:180.e; BA.22:53p; GM.81*:239; PA.19d*:177; WC.62*:56

Poèmes et lithographies L007. Cannes. 16-May/1949 (published 1954). Ink, pen, wash drawing, litho crayon & gouache on cut transfer papers, edition 50. 50 x 65 cm. The Museum of Modern Art, NYC. (Inv 1006.1964.7). The Louis E. Stern Collection.

OPP.49:141; B.I:621; GC:69.07; M:180.g; BA.22:52p; CN.56*:15; GM.81*:241; WC.62*:56





Poèmes et lithographies L012. Cannes. 24-May/1949 (published 1954). Ink, pen, wash drawing, litho crayon & gouache on cut transfer papers, edition 50. 50 x 65 cm. The Museum of Modern Art, NYC. (Inv 1006.1964.12). The Louis E. Stern Collection.

OPP.49:146; B.I:626; GC:69.12; M:180.l; BA.22:53p; CN.56*:17; GM.81*:246; HK.65:128p; WC.62*:56

Poèmes et lithographies L014. Cannes. 24-May/1949 (published 1954). Ink, pen, wash drawing, litho crayon & gouache on cut transfer papers, edition 50. 50 x 65 cm. The Museum of Modern Art, NYC. (Inv 1006.1964.14). The Louis E. Stern Collection.

OPP.49:148; B.I:628; GC:69.14; M:180.n; BA.22*:n/a; CN.56*:16; CW.89:289p; DU.95:265p; GM.81*:248; WC.62*:56





Les banderilles. Paris. 25-May/1949. Lithograph on Arches. [46,7 x 49,3] 49,7 x 65,3 cm. Christie's. #177, 1322, 04/28/03. Also Museu Picasso, Barcelona.

OPP.49:093; B.I:610; M:171; MPB:70.137; MG.10a*:37

Vénus et l'Amour (d'après Cranach). Paris. 25-May/1949. Lithograph on Arches. 64,7 x 34,9 cm. Kunstmuseum Picasso, Münster. Also Christie's. #189, 1322, 04/28/03.

OPP.49:112; M:182; LW.15*:212p; PM.10:68p





Vénus et l'Amour (d'après Cranach). Paris. 25-May/1949.
Lithograph on ARches. [75 x 36,2] 76 x 38 cm. Museum Würth,
Künzelsau. (Inv 207). Also Galerie Berndt, Keulen; Christie's.
#191, 1322, 04/28/03.

OPP.49:114; B.I:614; M:184; CN.56*:18; KU.16*:n/a;
LO.98b*:n/a; RD.08*:100p; RT.99*:72

Vénus et l'amour (d'après Cranach). Paris. [Spring] 25-
May/1949. Lithograph. 65,4 x 50,2 cm. Sotheby's. #148, N08786,
10/27/11.

OPP.49:229; M:183.01; PM.10:69p





David et Bethsabée (d'après Cranach) (VI.B). Paris. [7-April~] 29-May/1949. Lithograph on Arches paper, edition 50. 65,3 x 48,1 cm. The Museum of Modern Art, NYC. (Inv 363.1955). Curt Vallentin Bequest. Also Staatsgalerie Stuttgart. (Inv A 51/1010). Graphische Sammlung.

OPP.49:067; B.I:442; M:109.06Bis; AH.13*:114; CH.04*:15; CH.68a*:162; ED.07*:62; GB.14*:137; GB.87:211; GM.00:214; GM.81*:233; GP.96:282p; JB.08:45p; KG.71:148; KG.85:148; ME.82a*:119; MF.97:79p; PD.09:409p; PP.20*:307; SG.96:4.27; UP.00:936; WL.17*:20; WR.72*:171p; WR.80*:395p; WW.91:476p

Poèmes et lithographies L011. Cannes. 29-May/1949 (published 1954). Ink, pen, wash drawing, litho crayon & gouache on cut transfer papers, edition 50. 50 x 65 cm. The Museum of Modern Art, NYC. (Inv 1006.1964.11). The Louis E. Stern Collection.

OPP.49:145; B.I:625; GC:69.11; M:180.k; BA.22:53p; GM.81*:245; WC.62*:56





Vénus et l'Amour (II) (d'après Cranach). Paris. 30-May/1949. Lithograph on Arches, edition 50. [68 x 50] [67 x 50] [76 x 56,5] [76 x 36] [67,3 x 48,2] 67 x 49,2 cm. The Norton Simon Museum, Pasadena, CA. Gift of Mr. Norton Simon, 1983. Also Museum Würth, Künzelsau. (Inv 765); Christie's. #160, 9632, 04/25/01.

OPP.49:018; B.I:613; M:183.02; BS.55:210; GB.87:213; GM.81*:234; LO.98b*:n/a; MI.53*:284; PE.01a:32p; RD.08*:103p; RT.99*:71; SG.96:4.11

Femme aux cheveux verts (b.I) (La femme à la résille). Paris. 30-May/1949. Lithograph on Arches wove paper, edition 6. 66 x 48,3 cm. Kunstmuseum Picasso, Münster. (Inv 497.178bis).

OPP.49:129; M:178.b.01; GM.00:497; MM.02*:182p





Femme aux cheveux verts (b.II) (La femme à la résille).
Paris. 30-May/1949. Lithograph. 65,3 x 50 cm. Christie's. #84,
7958, 03/29/11.

OPP.49:225; M:178.b.02

La femme à la résille (Femme aux cheveux verts).
Paris. 30-May/1949. Lithograph on Arches paper. 65,1 x
49,8 cm. Christie's. #45, 20976, 04/22/22.

OPP.49:340; M:178.03B



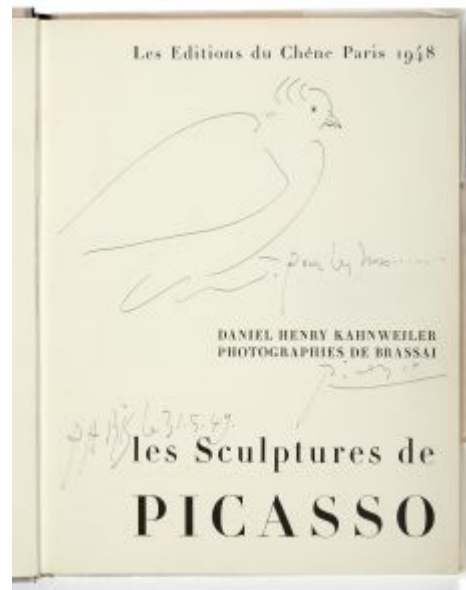


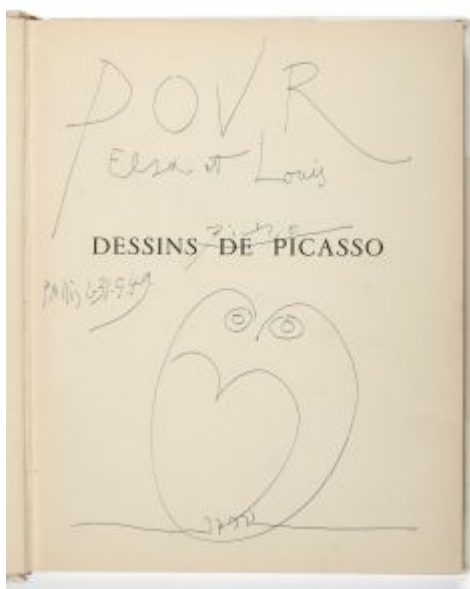
Vénus et l'Amour (d'après Cranach). Paris. [Spring] 30-May/1949~1951. Etching & aquatint on wove paper, edition 50. 90,5 x 53 cm. Musée National d'Art Moderne, Centre Georges Pompidou, Paris. (Inv AM1984-663). Donation Louise et Michel Leiris 1984. Sotheby's. #173A, L01172, 12/06/01.

OPP.49:022; B.II:1835; Ba:876; CH.04*:18; JR.10*:89p; MD.02*:370p; WL.17*:22

Colombe. Paris. 31-May/1949. Ballpoint pen on title page of book Daniel-Henry Kahnweiler, Les sculptures de Picasso. 31 x 23,2 cm. Artcurial. #317, 4252, 12/07/22.

OPP.49:343





Hibou. Paris. 31-May/1949. Ink on cover page of the book Christian Zervos, Dessins de Picasso - 1892-1948. 31,4 x 31,5 cm. Artcurial. #316, 4252, 12/07/22.

OPP.49:344

Poèmes (Iliadz, Poésie de mots inconnus). Paris. June/1949. Lithograph on vellum. 25,3 x 18,7 cm. Yale University Art Gallery. (Inv 1958.52.160). The Ernest C. Steefel Collection of Graphic Art. Gift of Ernest C. Steefel. Also Christie's. #188, 1322, 04/28/03.

OPP.49:097; B.I:630; GC:54.02;
M:181.b; PP.19:103p; SF.09*:22b





Poèmes (Iliadz, Poésie de mots inconnus). Paris. June/1949. Pen handwriting on lithographic paper transferred to stone. 25,3 x 18,7 cm. Yale University Art Gallery. (Inv 1958.52.160). The Ernest C. Steefel Collection of Graphic Art. Gift of Ernest C. Steefel. Also Christie's. #335, 7558, 11/27/12.

OPP.49:149; B.I:629; GC:54.03; M:181; BP.21:774p; PP.19:104p; SF.09:22a

L'enfant d'oradour. Vallauris. 7-June/1949. India ink & gouache on paper. 25 x 32,5 cm. Archives départementales de la Haute-Vienne, Limoges. In deposit from Ville de Oradour-sur-Glane.

OPP.49:064; PA.19d*:224; TO.04*:246





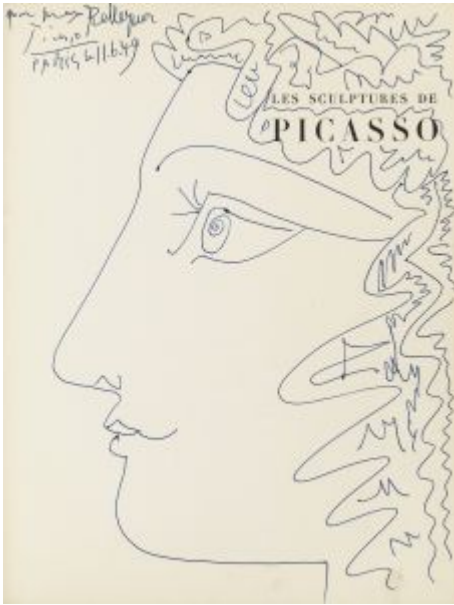
Claude à deux ans avec son cheval à roulettes. Vallauris. 9-June/1949. Oil on canvas. [130 x 97,1] [133 x 97] 133 x 98 cm. Private collection, Hong Kong. Formerly Sotheby's. #35, N08587, 11/04/09.

OPP.49:004; PP.49:033; Z.XV:144; BF.14:83p; BH.72*:n/a; BS.55:212; BS.67a*:29; DT.78:78; GP.96:293p; HK.65:130p; JL.71:19p; MI.53*:138; MR.53:116p; NY.75c*:n/a; ON.66:34p; PG.76*:n/a; PI.55*:n/a; RO.53*:106; WS.94:108p

Claude à deux ans avec son cheval à roulettes. Vallauris. 9-June/1949. Oil on canvas. [130,2 x 95,9] 129,7 x 96,5 cm. Christie's. #20A, 17154, 05/13/19. Formerly The Bellagio Gallery of Fine Art, Las Vegas; Sotheby's. #75, 05/18/83; Marina Picasso Collection. (Inv 13190).

OPP.49:006; PP.49:034; Z.XV:145; BG.99:152p; CP.95:52p; JR.12*:123p; MB.84*:150; MP.81*:242; VE.81*:291; WS.95a*:128



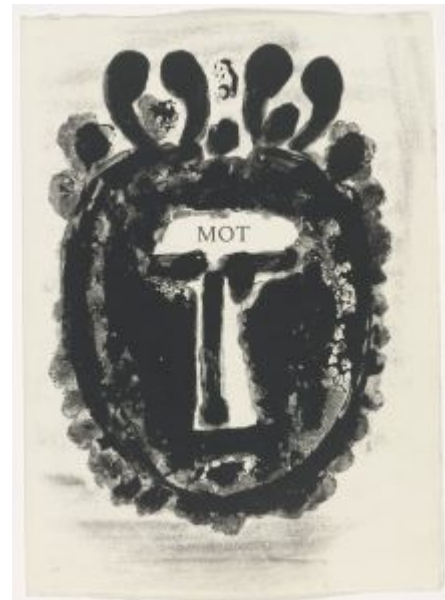


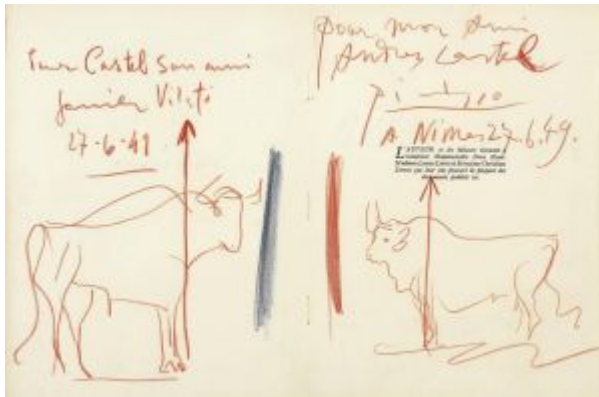
Profil féminin (Daniel-Henry Kahnweiler, Les sculptures de Picasso). Paris. 11-June/1949. Blue ink on cover of Daniel-Henry Kahnweiler, Les sculptures de Picasso. 31 x 23,4 cm. Sotheby's. #178, PF1113, 11/09/11.

OPP.49:230

Aimé Césaire, Corps Perdu L003 (Mot). Paris. 13-June/1949. Sugar aquatint & etching on Montval wove paper. [38,5 x 28,5] [38,8 x 28,2] [39,5 x 28,7] 40,7 x 30,6 cm. Fine Arts Museums of San Francisco. (Inv 1999.165.4.3). Gift of the Reva & David Logan Foundation. Also Also Beinecke Rare Book and Manuscript Library. Yale University. Gift of John Hay Whitney.

OPP.49:185; B.I:634; Ba:842; GC:56.03; BA.12b*:107p; GM.81*:251; SF.09*:25





Taureaux (Pour André Castel). Nîmes. 27-June/1949. Crayon. 24,1 x 19 cm. Galerie de Bellecour. 2005. Formerly Sotheby's. #149, W04704, 03/24/04; Sotheby's. #144, PF3005, 06/12/03.

OPP.49:116

Le taureau. Vallauris. 30-June/1949. Sanguine on wove paper. 51 x 66 cm. Fundación Almine & Bernard Ruiz-Picasso para el Arte.

OPP.49:276; HO.16a*:128p;
JC.01b*:111; JR.17*:n/a; MG.18*:80p;
NY.21g*:69





L'artiste dessinant au crayon lumineux: figure (Avec Gjon Mili). Vallauris. August/1949. Gelatin silver print of light photograph. S/U. Private collection.

OPP.49:348

L'artiste dessinant au crayon lumineux: femme (Avec Gjon Mili). Vallauris. August/1949. Gelatin silver print of light photograph. 28 x 30,5 cm. Christie's. #0580, 5162, 06/06/07. Also Christie's. #72, 1642, 10/10/05.

OPP.49:154; BD.16:70p; JR.12:302p; WR.80:385p





L'artiste dessinant au crayon lumineux: vase de fleurs (Avec Gjon Mili). Vallauris. August/1949. Gelatin silver print of light photograph. S/U. Private collection.

OPP.49:235

L'artiste dessinant au crayon lumineux: figure (Avec Gjon Mili). Vallauris. August/1949. Gelatin silver print of light photograph. 33 x 26,5 cm. Musée Picasso, Paris. (Inv APPH2779).

OPP.49:236; BD.16:71p





L'artiste dessinant au crayon lumineux: taureau (Avec Gjon Mili). Vallauris. August/1949. Gelatin silver print of light photograph. S/U. Private collection.

OPP.49:237

L'artiste dessinant au crayon lumineux: figure (Avec Gjon Mili). Vallauris. August/1949. Gelatin silver print of light photograph. S/U. Private collection.

OPP.49:238





L'artiste dessinant au crayon lumineux: figure (Avec Gjon Mili). Vallauris. August/1949. Gelatin silver print of light photograph. S/U. Private collection.

OPP.49:239

L'artiste dessinant au crayon lumineux: figure (Avec Gjon Mili). Vallauris. August/1949. Gelatin silver print of light photograph. S/U. Private collection.

OPP.49:240



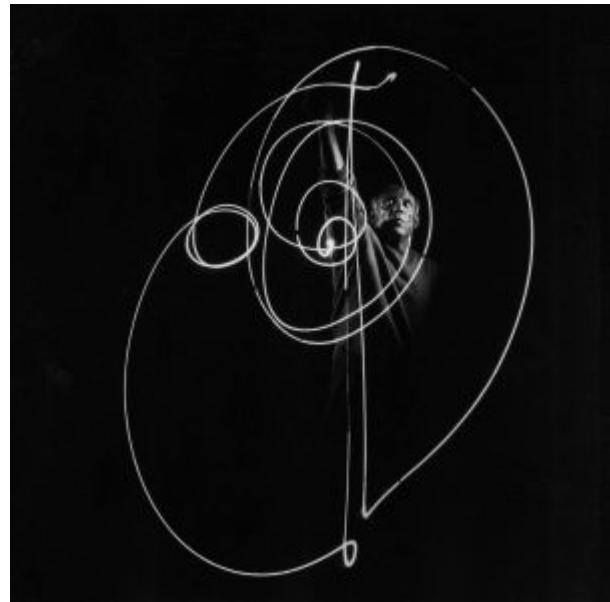


L'artiste dessinant au crayon lumineux: l'éléphant (Avec Gjon Mili). Vallauris. August/1949. Gelatin silver print of light photograph. S/U. Private collection.

OPP.49:241

L'artiste dessinant au crayon lumineux: cercles (Avec Gjon Mili). Vallauris. August/1949. Gelatin silver print of light photograph. S/U. Private collection.

OPP.49:242





L'artiste dessinant au crayon lumineux: visage (Avec Gjon Mili). Vallauris. August/1949. Gelatin silver print of light photograph. S/U. Private collection.

OPP.49:243

L'artiste dessinant au crayon lumineux: cercles (Avec Gjon Mili). Vallauris. August/1949. Gelatin silver print of light photograph. S/U. Private collection.

OPP.49:244

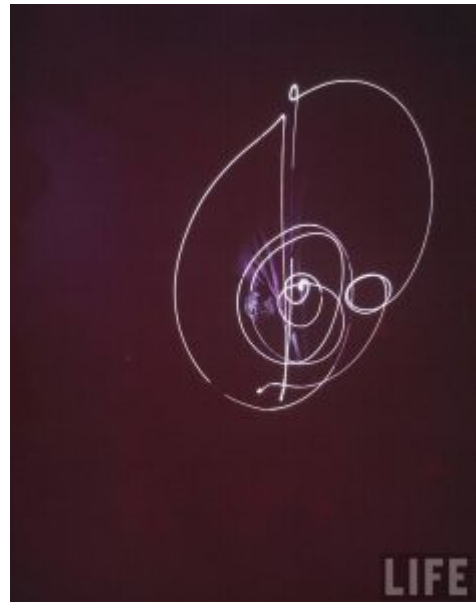




Figure réalisée au crayon lumineux (Avec Gjon Mili).
Vallauris. August/1949. Gelatin silver print of light photograph.
34,1 x 26,3 cm. Musée Picasso, Paris. (Inv APPH1410).

OPP.49:246; BD.16:71p

L'artiste dessinant au crayon lumineux: figure (Avec Gjon Mili). Vallauris. August/1949. Gelatin silver print of light photograph. S/U. Private collection.

OPP.49:247; JR.12:302p; JR.14:325p





L'artiste dessinant au crayon lumineux: figure (Avec Gjon Mili). Vallauris. August/1949. Gelatin silver print of light photograph. S/U. Private collection.

OPP.49:248

L'artiste dessinant au crayon lumineux: cercles (Avec Gjon Mili). Vallauris. August/1949. Gelatin silver print of light photograph. 33 x 26,5 cm. Musée Picasso, Paris. (Inv MPPH2683).

OPP.49:249; BD.16:70p





L'artiste dessinant au crayon lumineux: buste de femme (Avec Gjon Mili). Vallauris. August/1949. Gelatin silver print of light photograph. 33 x 24 cm. Musée Picasso, Paris. (Inv APPH1418).

OPP.49:250

L'artiste dessinant au crayon lumineux: taureau (Avec Gjon Mili). Vallauris. August/1949. Gelatin silver print of light photograph. 29,4 x 23 cm. Musée Picasso, Paris. (Inv APPH 1420).

OPP.49:251; AB.97b*:251





L'artiste dessinant au crayon lumineux: centaure (Avec Gjon Mili). Vallauris. August/1949. Gelatin silver print of light photograph. 34 x 26,4 cm. Musée Picasso, Paris. (Inv APPH1415).

OPP.49:252; BD.16:71p; CF.17:10p; DP.20:34p;
JR.12:302p; JR.14:324p; NY.21g:249p; PD.09:362p

L'artiste dessinant au crayon lumineux: taureau (Avec Gjon Mili). Vallauris. August/1949. Gelatin silver print of light photograph. 34,2 x 26,5 cm. Musée Picasso, Paris. (Inv APPH1414).

OPP.49:280; BD.16:71p; BF.14:132p





L'artiste dessinant au crayon lumineux: figure (Avec Gjon Mili). Vallauris. August/1949. Gelatin silver print of light photograph. 33,9 x 26 cm. Musée Picasso, Paris. (Inv APPH1416).

OPP.49:281; JR.14*:325p

L'artiste dessinant au crayon lumineux: torero (Avec Gjon Mili). Vallauris. August/1949. Gelatin silver print of light photograph. 34,2 x 26,6 cm. The Frances Lehman Loeb Art Center. Vassar College. (Inv 2003.16.3). Purchase, Emilie Welles, class of 1955 and matching funds provided by The Charina Foundation and The Kautz Family Foundation.

OPP.49:282; PK.03*:n/a





L'artiste dessinant au crayon lumineux: pigeon (Avec Gjon Mili). Vallauris. August/1949. Gelatin silver print of light photograph. S/U. Private collection.

OPP.49:290

L'artiste dessinant au crayon lumineux: figure (Avec Gjon Mili). Vallauris. August/1949. Gelatin silver print of light photograph. S/U. Private collection.

OPP.49:294





L'artiste dessinant au crayon lumineux: figure (Avec Gjon Mili). Vallauris. August/1949. Gelatin silver print of light photograph. 29,5 x 26 cm. Musée Picasso, Paris. (Inv APPH1421).

OPP.49:296; BP.21:79p; LO.16:26p

Taureau réalisé au crayon lumineux (Avec Gjon Mili). Vallauris. August/1949. Gelatin silver print of light photograph. 34,4 x 26,4 cm. Musée Picasso, Paris. (Inv APPH1417).

OPP.49:301





Homme courant réalisé au crayon lumineux (Avec Gjon Mili). Vallauris. August/1949. Gelatin silver print of light photograph. 33 x 26,3 cm. Musée Picasso, Paris. (Inv APPH1422).

OPP.49:303; PA.19e:18p

L'artiste dessinant au crayon lumineux: figure (Avec Gjon Mili). Vallauris. August/1949. Gelatin silver print of light photograph. S/U. Private collection.

OPP.49:346





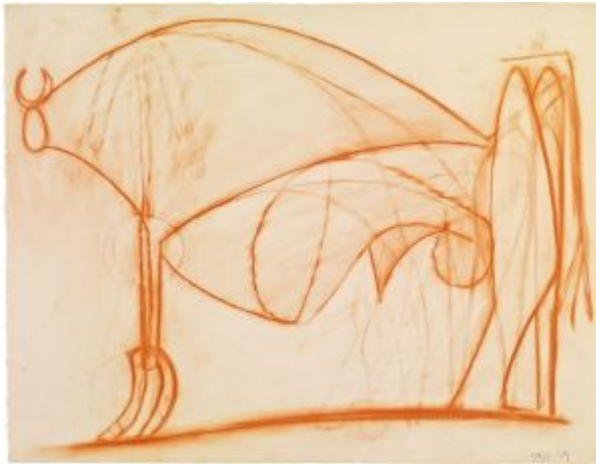
L'artiste dessinant au crayon lumineux: figures (Avec Gjon Mili). Vallauris. August/1949. Gelatin silver print of light photograph. S/U. Private collection.

OPP.49:347

L'artiste dessinant au crayon lumineux: figure (Avec Gjon Mili). Vallauris. August/1949. Gelatin silver print of light photograph. S/U. Private collection.

OPP.49:349





Le taureau. Vallauris. 5-August/1949. Sanguine on wove paper. 51 x 66 cm. Fundación Almine & Bernard Ruiz-Picasso para el Arte.

OPP.49:295; HO.16a*:129p; MG.18*:80p; NY.21g*:70

Femme aux cheveux verts (a.III) (La femme à la résille). Paris. September/1949. Lithograph, edition 50. 65,7 x 50,2 cm. Kunstmuseum Picasso, Münster. (Inv 501.178ter). Also Mr. & Mrs Harry Lenart Collection.

OPP.49:115; M:178.a.03; DG.87:32p; DK.61*:164; GM.00:501; JA.09*:189p; JR.12:188p; KB.01*:139; MM.02*:183p





Vase (Á Simone Longet). Golfe-Juan. 15-September/1949. Color crayons on paper. 49 x 17 cm. Private collection.

OPP.49:298; CE.04*:59

Staline à ta santé. [Rome]. November/1949. Pen & India ink on paper. 21 x 15 cm. Musée Picasso, Paris. Dation 1979.

OPP.49:111; MPP:1391; PP.49:039; BA.03a*:238; BA.19c*:176p; GU.00:155





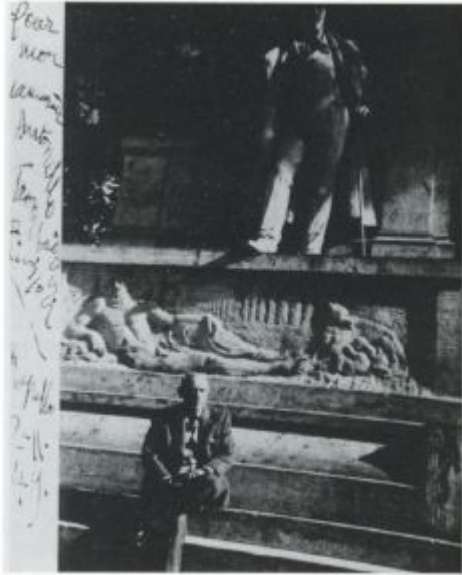
Staline à ta santé. [Rome]. November/1949. Pen & India ink. 21,7 x 14,2 cm. Musée Picasso, Paris. Dation 1979.

OPP.49:122; MPP:1393; PP.49:040

Staline à ta santé. [Rome]. November/1949. Pen & India ink on Arches paper. 21,5 x 14 cm. Musée Picasso, Paris. Dation 1979.

OPP.49:133; MPP:1392; PP.49:041; LZ.06:39; PF.10:28p; TO.04*:280





Dédicace (à Antonello Trombadori). Rome. 2-November/1949. Ink on photograph. S/U. Private collection.

OPP.49:330; VR.90:180p

Colombe. Vallauris. 10-November/1949. Terre de faïence, painted, engraved & glazed. 38,5 x 31 cm. Espace Tajan. #17, 2121, 03/17/21.

OPP.49:328





Aimé Césaire, Corps Perdu L002 (Portrait d'Aime Césaire lauré). [Vallauris]. 15-November/1949. Etching, edition 219. 41,2 x 30,1 cm. Sotheby's. #259, L00119, 06/21/00. Also Fine Arts Museums of San Francisco. (Inv 1999.165.4.2).

OPP.49:168; B.I:633; Ba:841; GC:56.02; MPP:3558; BA.12b*:107p; GM.81*:250; JB.65:74; JL.71:265p; JR.21:869p; SF.09:194p

Maternité. Vallauris. 15-November/1949. Painted & glazed ceramic; plaque. 32,7 x 24,3 cm. Sotheby's. #126, L20005, 02/19/20. Formerly Marina Picasso Collection.

OPP.49:316





Projet de couverture pour la revue Europe. [Vallauris]. 18-November/1949. Ink, graphite & sanguine on paper. 32,8 x 23,5 cm. Musée Picasso, Paris. Dation 1979.

OPP.49:156; MPP:1397; PP.49:037; PA.19d*:264

Projet de couverture pour la revue Europe. [Vallauris]. 18-November/1949. Pencil. 51 x 66 cm. Musée Picasso, Paris. Dation 1979.

OPP.49:159; MPP:1395; PP.49:036





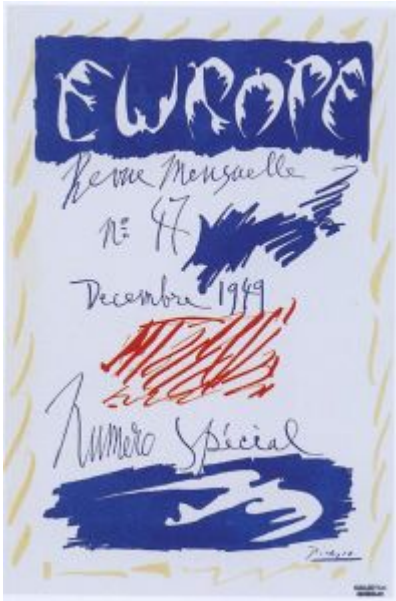
Projet de couverture pour la revue Europe. [Vallauris]. 18-November/1949. Pencil. 51 x 66 cm. Musée Picasso, Paris. Dation 1979.

OPP.49:160; MPP:1394; PP.49:035; BA.19c*:188p; YB.99*:201

La Galloise à Vallauris. Vallauris. 25-November/1949. Soft pencil, partially blurred. 51 x 66 cm. Musée Picasso, Paris. Dation 1979.

OPP.49:132; MPP:1396; PP.49:038; JL.67b:82p; JL.71:119; MM.02*:159p; RW.07*:n/a; TO.99*:98; UW.93:38b





Europe, numéro spécial: couverture d'après un dessin de Pablo Picasso. [Vallauris]. 1-December/1949. Magazine, No. 47. 23 x 14,5 x 1,6 cm. Musée d'Art et d'Histoire Paul Éluard, Saint-Denis. (Inv 2017.0.02). Also Gérard Gosselin Collection.

OPP.49:289; BP.21:78p; PA.19d*:263; PF.10*:61

Hibou. Vallauris. 25-December/1949. Ink on paper. S/U. Private collection.

OPP.49:262; UA.80:22p





Hibou. Vallauris. 27-December/1949. Pencil on paper. 50,5 x 65,5 cm. Fundación Almine & Bernard Ruiz-Picasso para el Arte.

OPP.49:260; PF.10*:33

Chouette. Vallauris. 30-December/1949. White clay, thrown piece, decorated with wash & white enamel, incisions, all covered with brushwork. 19 x 18 x 22 cm. Musée Picasso, Paris. Dation 1979.

OPP.49:158; MPP:3692; BS.55:73p; CK.04*:100; DU.94*:n/a; LE.21*:251; ME.82a*:121; MP.85:459; TU.15*:110; UP.00:911; VA.95*:n/a





Femme enceinte. Vallauris. 1949. Bronze; original in plaster & wood; Casting Stamp E Godard Cire Perdue. 130 x 37 x 11,5 cm. Musée Picasso, Paris. Dation 1979. Also Fundación Almine & Bernard Ruiz-Picasso para el Arte.

OPP.49:017; MPP:334; PP.49:041*; WS:347.II; AB.12*:238p; BA.23*:220p; BD.16*:75; MA.08a*:n/a; MG.18*:111p; MN.80*:n/a; NI.03*:n/a; NY.21g:61p; PA.19e*:96; PA.79a*:317; PD.09:382p; SD.05*:123; SP.04*:n/a; SY.11*:n/a; TG.94*:106; TU.15*:114; WR.80*:398p

Taureau attaquant. Vallauris. 1949. Hand-coloured terracotta medallion. 4,5 cm. Christie's. #119, 3692, 12/01/11.

OPP.49:069



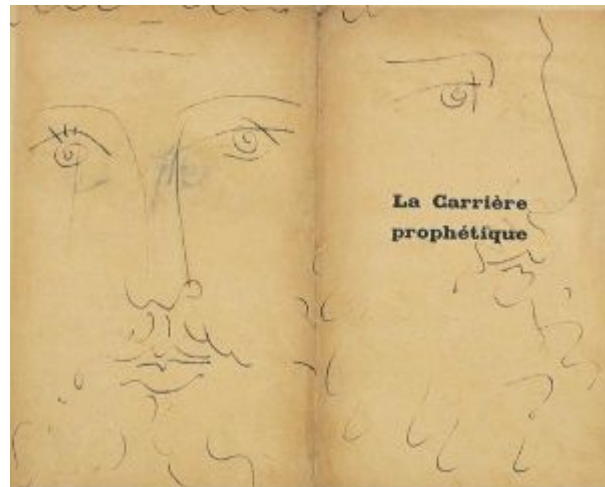


La petite colombe (Al Señor Don Jaime Sabartés). Paris. March/1949. Lithograph on wove paper [Dedicated copy of *La petite colombe*]. 26 x 20,5 cm. Museu Picasso, Barcelona. Sabartés Collection.

OPP.49:110; MPB:70.001; TO.04*:265

Têtes d'homme barbu. Paris. 1949. Pen & ink on page of book André Roland de Renéville, Rimbaud le voyant. 19 x 23,7 cm. Sotheby's. #102, N08064, 01/19/05. Formerly Sotheby's. #443, L04006, 02/04/04.

OPP.49:117





Femme assise. Paris. 1949. [Oil on canvas]. S/U. Michelle Rosenfeld Gallery. 2006.

OPP.49:118

Petite chouette. Vallauris. 1949.
Earthenware pitcher, painted in blue,
glazed on the interior, edition 200. 11,5
cm. Christie's. #7, 3557, 10/09/13.

OPP.49:124; AR:83





Oiseau de profil. Vallauris. 1949. Red ceramic medallion, edition 60. 37 cm. Christie's. #195, 1705, 09/26/06.

OPP.49:128; AR:91; B.III:4; CE.04*:313

Aimé Césaire, Corps Perdu L001 (Couverture). Paris. 1949. Etching. 39,7 x 28,5 cm. Christie's. #388, 5324, 06/09/06. Also Fine Arts Museums of San Francisco. (Inv 1999.165.4.1).

OPP.49:172; B.I:632; GC:56.01; GM.81*:249





L'enfant. Paris. 1949. Ink. S/U. Private collection.

OPP.49:174

Femme debout. Vallauris. 1949. White earthenware, thrown, modelled, painted with slips. 39 cm. Private collection.

OPP.49:175; CE.04:35; GR.74:130; MM.98:33



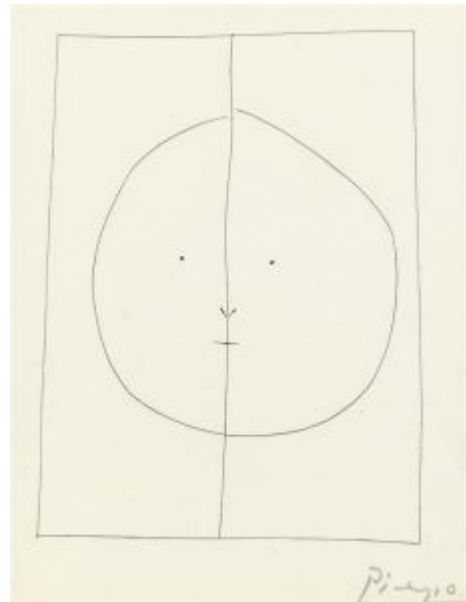


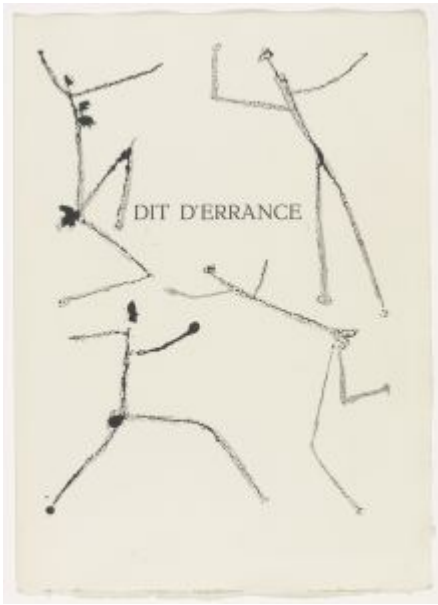
Femme à la mantille avec une fleur (Le Carmen des Carmen). Paris. 1949. Aquatint with extensive handcolouring in green crayon [After *Prosper Mérimée, Louis Aragon, Le Carmen des Carmen L04 (Femme a la mantille avec une fleur: Carmen)*]. 41 x 31 cm. Christie's. #12, 11966, 09/21/16.

OPP.49:176

Carmen. Paris. 1949. Etching, edition 320. 25,7 x 19,7 cm. Christie's. #0211, 1990, 04/29/08.

OPP.49:177





Aimé Césaire, Corps Perdu L030 (Dit d'errance). Paris. 1949. Sugar lift aquatint on Montval wove paper. 39,5 x 29,5 cm. Fine Arts Museums of San Francisco. (Inv 1999.165.4.30). Gift of the Reva & David Logan Foundation.

OPP.49:178; B.I:661; GC:56.30; GM.81*:278

Aimé Césaire, Corps Perdu L031 (O pamplemousse). Paris. 1949. Engraving with burin on Montval wove paper. 39,5 x 28,5 cm. Fine Arts Museums of San Francisco. (Inv 1999.165.4.31). Gift of the Reva & David Logan Foundation.

OPP.49:179; B.I:662; GC:56.31; GM.81*:279





Tête d'homme barbu. Vallauris. 1949. Terracotta medallion, edition 75. 4,2 cm. Fundació Palau, Caldes d'Estrac. (Inv 0000803). Also Christie's. #115, 5517, 05/21/08.

OPP.49:180; AR:90; B.III:3; CE.04*:312

Quatre visages. Vallauris. 1949. Painted & glazed ceramic plate. 27 cm. Sotheby's. #418, L08008, 06/26/08.

OPP.49:182



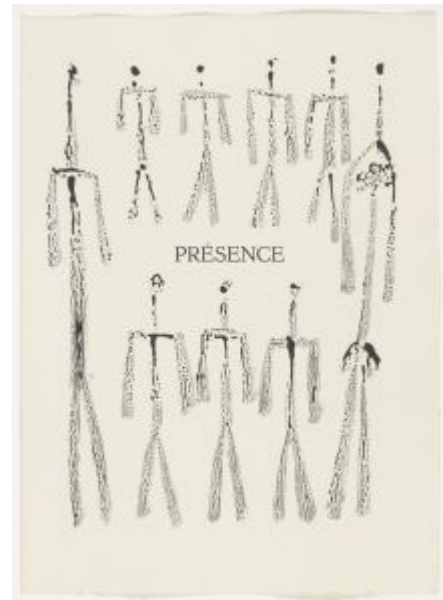


Aimé Césaire, Corps Perdu L005 (Feuille). Paris. 1949. Engraving with burin on Montval wove paper. 38,8 x 28,2 cm. Fine Arts Museums of San Francisco. (Inv 1999.165.4.5). Gift of the Reva & David Logan Foundation.

OPP.49:186; B.I:636; GC:56.05; GM.81*:253

Aimé Césaire, Corps Perdu L006 (Présence). Paris. 1949. Etching on Montval wove paper. 39,5 x 28,5 cm. Fine Arts Museums of San Francisco. (Inv 1999.165.4.6). Gift of the Reva & David Logan Foundation.

OPP.49:187; B.I:637; GC:56.06; MPP:3558.6; BA.12b*:107p; GM.81*:254





Aimé Césaire, Corps Perdu L007 (Accouplement). Paris. 1949. Engraving with burin on Montval wove paper. 38,8 x 28,2 cm. Fine Arts Museums of San Francisco. (Inv 1999.165.4.7). Gift of the Reva & David Logan Foundation.

OPP.49:188; B.I:638; GC:56.07; GM.81*:255

Aimé Césaire, Corps Perdu L008 (Visage de profil). Paris. 1949. Engraving with burin on Montval wove paper. 38,8 x 28,2 cm. Fine Arts Museums of San Francisco. (Inv 1999.165.4.8). Gift of the Reva & David Logan Foundation.

OPP.49:189; B.I:639; GC:56.08; GM.81*:256





Aimé Césaire, Corps Perdu L009 (Longitude). Paris. 1949. Sugar lift aquatint on Montval wove paper. 38,8 x 28,2 cm. Fine Arts Museums of San Francisco. (Inv 1999.165.4.9). Gift of the Reva & David Logan Foundation.

OPP.49:190; B.I:640; GC:56.09; GM.81*:257

Aimé Césaire, Corps Perdu L010 (Feuille et insecte). Paris. 1949. Engraving with burin on Montval wove paper. 38,8 x 28,2 cm. Fine Arts Museums of San Francisco. (Inv 1999.165.4.10). Gift of the Reva & David Logan Foundation.

OPP.49:191; B.I:641; GC:56.10; GM.81*:258





Aimé Césaire, Corps Perdu L011 (Eho roto desperado).
Paris. 1949. Engraving with burin on Montval wove paper. 38,8 x 28,2 cm. Fine Arts Museums of San Francisco. (Inv 1999.165.4.11). Gift of the Reva & David Logan Foundation.

OPP.49:192; B.I:642; GC:56.11; GM.81*:259

Aimé Césaire, Corps Perdu L012 (Élégie-Équation).
Paris. 1949. Sugar lift aquatint on Montval wove paper. 39,5 x 28,5 cm. Fine Arts Museums of San Francisco. (Inv 1999.165.4.12). Gift of the Reva & David Logan Foundation.

OPP.49:193; B.I:643; GC:56.12; GM.81*:260





Aimé Césaire, Corps Perdu L013 (Néant ni diamant). Paris. 1949. Engraving with burin on Montval wove paper. 39,5 x 28,5 cm. Fine Arts Museums of San Francisco. (Inv 1999.165.4.13). Gift of the Reva & David Logan Foundation.

OPP.49:194; B.I:644; GC:56.13; GM.81*:261

Aimé Césaire, Corps Perdu L014 (Personnage). Paris. 1949 [1950]. Engraving with burin on Montval wove paper. 39,5 x 28,5 cm. Fine Arts Museums of San Francisco. (Inv 1999.165.4.14). Gift of the Reva & David Logan Foundation.

OPP.49:195; B.I:645; GC:56.14; BS.55:344p; GM.81*:262; JL.71:265p



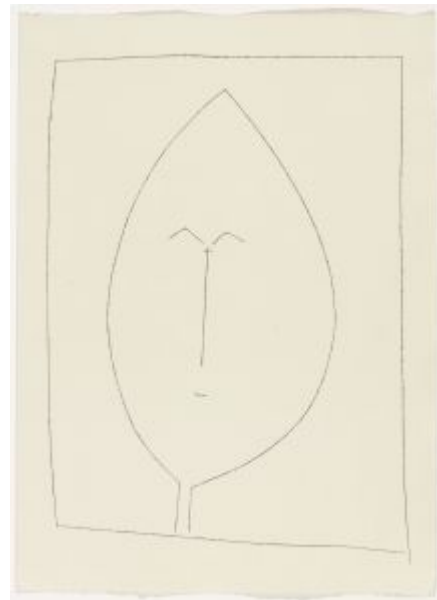


Aimé Césaire, Corps Perdu L016 (Rencontre bien totale). Paris. 1949. Engraving with burin on Montval wove paper with the watermark. 39,5 x 28,5 cm. Fine Arts Museums of San Francisco. (Inv 1999.165.4.16). Gift of the Reva & David Logan Foundation.

OPP.49:196; B.I:647; GC:56.16; GM.81*:264

Aimé Césaire, Corps Perdu L017 (Je perfore, j'insinue). Paris. 1949. Engraving with burin on Montval wove paper. 39,5 x 28,5 cm. Fine Arts Museums of San Francisco. (Inv 1999.165.4.17). Gift of the Reva & David Logan Foundation.

OPP.49:197; B.I:648; GC:56.17; GM.81*:265





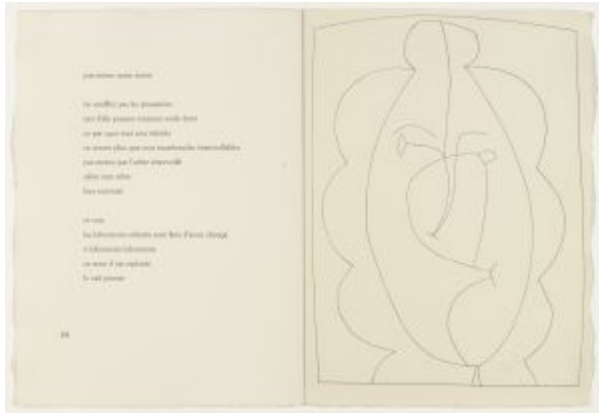
Aimé Césaire, Corps Perdu L018 (Naissances). Paris. 1949. Sugar lift aquatint on Montval wove paper. 39,5 x 28,5 cm. Fine Arts Museums of San Francisco. (Inv 1999.165.4.18). Gift of the Reva & David Logan Foundation.

OPP.49:198; B.I:649; GC:56.18; BA.12b*:107p; GM.81*:266

Aimé Césaire, Corps Perdu L019 (Visage). Paris. 1949. Engraving with burin on Montval wove paper. 39,5 x 28,5 cm. Fine Arts Museums of San Francisco. (Inv 1999.165.4.19). Gift of the Reva & David Logan Foundation.

OPP.49:199; B.I:650; GC:56.19; GM.81*:267





Aimé Césaire, Corps Perdu L020 (Tête de femme). Paris. 1949. Engraving with burin on Montval wove paper. 39,5 x 28,5 cm. Fine Arts Museums of San Francisco. (Inv 1999.165.4.20). Gift of the Reva & David Logan Foundation.

OPP.49:200; B.I:651; GC:56.20; GM.81*:268

Aimé Césaire, Corps Perdu L021 (Au Large). Paris. 1949. Sugar lift aquatint on Montval wove paper. 39,5 x 28,5 cm. Fine Arts Museums of San Francisco. (Inv 1999.165.4.21). Gift of the Reva & David Logan Foundation.

OPP.49:201; B.I:652; GC:56.21; GM.81*:269





Aimé Césaire, Corps Perdu L022 (Demoiselle). Paris. 1949. Engraving with burin on Montval wove paper. 39,5 x 28,5 cm. Fine Arts Museums of San Francisco. (Inv 1999.165.4.22). Gift of the Reva & David Logan Foundation. Also Staatsgalerie Stuttgart. (Inv D 61/207). Graphische Sammlung.

OPP.49:202; B.I:653; GC:56.22; ED.07*:64; GM.81*:270

Aimé Césaire, Corps Perdu L023 (Étreinte). Paris. 1949. Engraving with burin on Montval wove paper. 39,5 x 28,5 cm. Fine Arts Museums of San Francisco. (Inv 1999.165.4.23). Gift of the Reva & David Logan Foundation.

OPP.49:203; B.I:654; GC:56.23; GM.81*:271; HN.00*:76; SF.09:192p





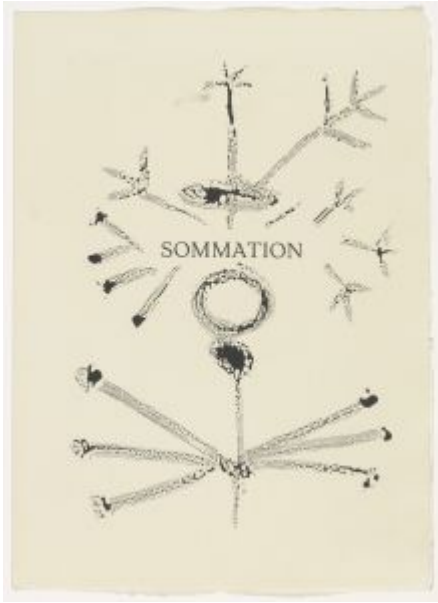
Aimé Césaire, Corps Perdu L025 (Femme-fleur). Paris. 1949. Engraving with burin on Montval wove paper. 39,5 x 28,5 cm. Fine Arts Museums of San Francisco. (Inv 1999.165.4.25). Gift of the Reva & David Logan Foundation.

OPP.49:204; B.I:656; GC:56.25; GM.81*:273; MM.02:42p

Aimé Césaire, Corps Perdu L026 (Feuilles). Paris. 1949. Engraving with burin on Montval wove paper. 39,5 x 28,5 cm. Fine Arts Museums of San Francisco. (Inv 1999.165.4.26). Gift of the Reva & David Logan Foundation.

OPP.49:205; B.I:657; GC:56.26; GM.81*:274





Aimé Césaire, Corps Perdu L027 (Sommatation). Paris. 1949. Sugar lift aquatint on Montval wove paper. 39,5 x 28,5 cm. Fine Arts Museums of San Francisco. (Inv 1999.165.4.27). Gift of the Reva & David Logan Foundation.

OPP.49:206; B.I:658; GC:56.27; GM.81*:275

Aimé Césaire, Corps Perdu L028 (Visage de face). Paris. 1949 [1950]. Engraving with burin on Montval wove paper. 39,5 x 28,5 cm. Fine Arts Museums of San Francisco. (Inv 1999.165.4.28). Gift of the Reva & David Logan Foundation.

OPP.49:207; B.I:659; GC:56.28; BS.55:70p; GM.81*:276





Aimé Césaire, Corps Perdu L029 (Miroir). Paris. 1949. Engraving with burin on Montval wove paper. 39,5 x 28,5 cm. Fine Arts Museums of San Francisco. (Inv 1999.165.4.29). Gift of the Reva & David Logan Foundation.

OPP.49:208; B.I:660; GC:56.29; GM.81*:277

Aimé Césaire, Corps Perdu L032 (Criminel avant né). Paris. 1949. Engraving with burin on Montval wove paper. 39,5 x 28,6 cm. Fine Arts Museums of San Francisco. (Inv 1999.165.4.32). Gift of the Reva & David Logan Foundation.

OPP.49:209; B.I:663; GC:56.32; GM.81*:280





Minotaure. Vallauris. [1949]. Terracotta. 4,2 x 3,5 cm.
Christie's. #120, 2340, 09/21/10.

OPP.49:213

Pigeon. Vallauris. 1949. White earthenware, modelled, incised. 15 x 24,5 cm. Private collection.

OPP.49:216; NC.10:68





Quatre visages. Vallauris. [1949]. Painted & glazed ceramic plate. 26 cm. Sotheby's. #159, L11005, 02/09/11.

OPP.49:219

Tête de femme. Paris. 1949. Oil on canvas. 61 x 50 cm. Private collection, Turin.

OPP.49:222; MM.67:57





Le corsage à carreaux. Paris. 1949. Lithograph. 64,5 x 49,5 cm. Christie's. #82, 7958, 03/29/11. Also Mr. & Mrs. Paul Ziffren Collection.

OPP.49:223; B.I:601; M:175.bis; DK.61*:163

Tanagra avec amphore. Vallauris. 1949. Wheeled & modeled figurine. 45 x 33 x 11 cm. Musée Picasso, Antibes.

OPP.49:226; DG.87:52p





Nature morte avec aubergine. Vallauris. 1949.
Oval ceramic dish. 32 x 38 cm. Musée Picasso, Antibes.

OPP.49:227; MPA:49.4.13; DG.87:55p;
EH.96:144p; ND.01*:116

Nature morte avec œuf et saucisse.
Vallauris. 1949. Oval ceramic dish. 32 x 38
cm. Musée Picasso, Antibes.

OPP.49:228; DG.87:55p





Quatre profils enlacés. Vallauris. 1949. Fully glazed ceramic plate. 27 cm. Christie's. #101, 3692, 12/01/11.

OPP.49:231

Scène de corrida. Vallauris. 1949. Oval dish painted in bistre, underglaze iron oxide against ground of grey with white reserve. 32 x 38 cm. Musée Picasso, Antibes.

OPP.49:232; MPA:49.4.8; ND.01*:114





Quatre profils enlacés. Vallauris. 1949. Glazed ceramic plate [Variant of *Quatre profils enlacés*]. 26,7 cm. Christie's. #7, 4232, 06/25-26/12.

OPP.49:255

Quatre profils enlacés. Vallauris. 1949. Glazed ceramic plate. 26,5 cm. Christie's. #8, 4232, 06/25-26/12.

OPP.49:256; AR:85; B.III:2; CE.04*:243; GP.96:296p





Petite chouette. Vallauris. 1949. Partially glazed ceramic pitcher [Variant of *Petite chouette*]. 13,7 cm. Christie's. #145, 7873, 10/25/12.

OPP.49:259; LE.21*:303

Visage. Vallauris. 1949. Grogged red earthenware, painted with enamel & slips, under glaze. 31,5 x 31,5 cm. Private collection.

OPP.49:263; JR.12*:273p





Colombe sur lit de paille. Vallauris. 1949. White earthenware platter, edition 300 [Variant of *Colombe sur lit de paille*]. 32 cm. Sotheby's. #16, L13162, 03/19/13.

OPP.49:266

Quatre profils enlacs. Vallauris. 1949. White clay plate, glazed & painted. 26,5 cm. Sotheby's. #215, L14162, 05/07/14.

OPP.49:268; B.III:1





Quatre profils enlacés (II). Vallauris. 1949.
Glazed red earthenware plate painted in colors
[Variant of *Quatre profils enlacés*. 25,4 cm.
Christie's. #5826, 9, 05/11/14.

OPP.49:269

Hibou. Vallauris. 1949. Ceramic. 31 cm.
Private collection.

OPP.49:270; DT.78:75





Tête de satyr. Vallauris. 1949. Painted & glazed terracotta. 38,7 x 32,3 x 3,6 cm. Mildred Lane Kemper Art Museum (Washington University, St. Louis). (Inv WU 3845). University purchase, Elizabeth Northrup McMillan Fund, 1954.

OPP.49:274

Femme aux cheveux verts (a.Ib) (La femme à la résille). Paris. 1949. Lithograph. 65,3 x 50,8 cm. Sotheby's. #33, N09217, 11/03/14.

OPP.49:277; M:178.a.01b





Jeune femme. Paris. 1949. Lithograph. 49,1 x 64,5 cm. Sotheby's. #37, N09217, 11/03/14.

OPP.49:278

Nature morte au vase de fleurs (II).
Paris. 1949. Lithograph. 49,5 x 64,5 cm.
Sotheby's. #38, N09217, 11/03/14.

OPP.49:279; M:146.02B





Femme allongée. Vallauris. 1949. Bronze with brown patina. 23,2 cm. Christie's. #1201, 3738, 05/15/15.

OPP.49:284; PP.49:040*; WS:345.II; PA.71g*:n/a

Quatre visages entrelacés. Vallauris. 1949. Painted ceramic; round plate. 26,5 cm. Christie's. #61, 16430, 11/07-13/18. Formerly Sotheby's. #145, L15007, 06/25/15; Marina Picasso Collection.

OPP.49:285





Personnage. Vallauris. 1949. Incised ceramic. 10 cm. Sotheby's. #211, L15007, 06/25/15.

OPP.49:287

Faune à la branche. Vallauris. 1949. Moulded ceramic. 23 cm. Sotheby's. #212, L15007, 06/25/15.

OPP.49:288; WS:344.I





Signature. Vallauris. [1949]. Ink on photograph. S/U. Private collection.

OPP.49:291

Femme debout. Vallauris. 1949. White earthenware, thrown, modeled, decorated in engobes. S/U. Private collection.

OPP.49:297; CE.04:35





Oiseau. Vallauris. [1949]. Painted, glazed & incised ceramic; plat long with crimped edges. 38,4 cm. Sotheby's. #6, N09727, 05/18/17. Formerly Marina Picasso Collection.

OPP.49:299; YM.86*:CM-3

Poèmes (Iliadz, Poésie de mots inconnus). Paris. 1949. Engraving, on Chine laid paper. 17,8 x 12,7 cm. Christie's. #303, 17163, 04/17-28/19.

OPP.49:304; Ba:839





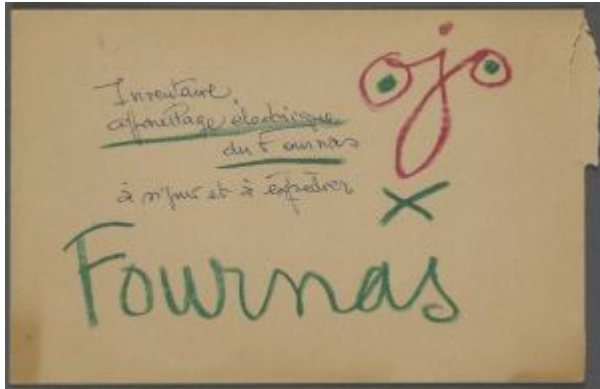
Quatre profils enlacés. Vallauris. 1949. White earthenware ceramic plate with colored engobe & glaze. 25 cm. Christie's. #70, 16091, 05/21/19.

OPP.49:305

Visage de femme. Paris. 1949. Pendant medallion in silver. 4,4 x 3,8 cm. Bonhams. #57, 25275, 05/21/19.

OPP.49:306; AR:92s



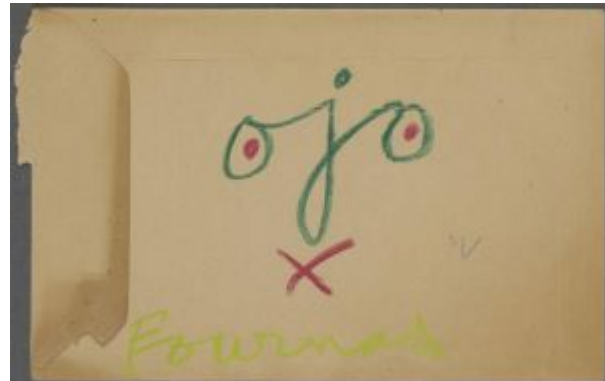


Enveloppe avec. Paris. [1949]. Crayon on envelope [Obverse]. S/U. Musée Picasso, Paris.

OPP.49:307

Enveloppe avec. Paris. [1949]. Crayon on envelope [Reverse]. S/U. Musée Picasso, Paris.

OPP.49:308



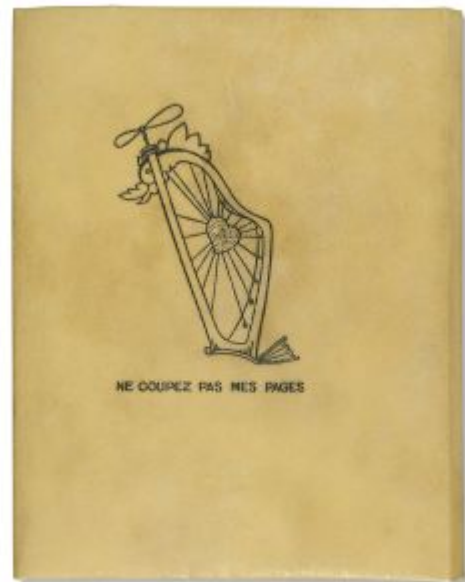


Colombe sur lit de paille. Vallauris. 1949. Rectangular plate, white clay engraved with a knife, slip decoration. 32 x 39 cm. Private collection.

OPP.49:309; PE.17*:79p

Poèmes (Iliadz, Poésie de mots inconnus). Paris. June/1949. Lithograph on vellum. 25,3 x 18,7 cm. Christie's. #53, 17590, 10/07/19.

OPP.49:310





Quatre visages de profil, en relief, entrelacés.

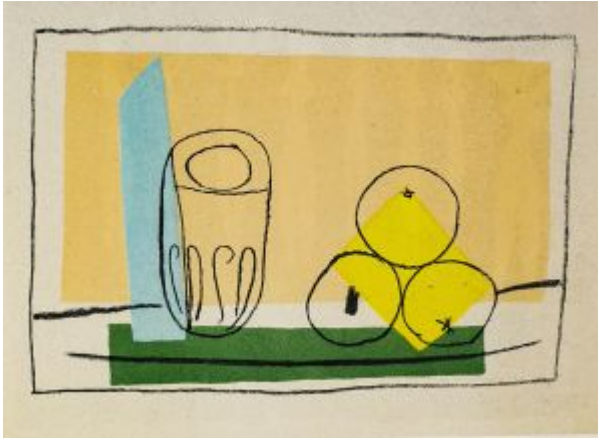
Vallauris. [1949]. Painted & partially glazed ceramic; square round plate. 26,2 cm. Sotheby's. #301, L20004, 02/05/20. Formerly Marina Picasso Collection.

OPP.49:314

Tête. [Vallauris]. [1949]. Incised & partially painted cement. 34 x 34 cm. Sotheby's. #329, L20004, 02/05/20. Formerly Marina Picasso Collection.

OPP.49:315





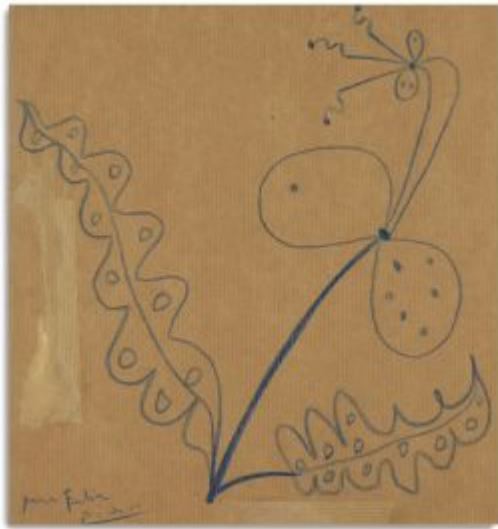
Nature morte aux trois pommes. Paris. 1949.
Lithograph. 15,9 × 12,1 cm. Private collection.

OPP.49:317

Corps perdu (Couverture). Paris. 1949 [1950].
Engraving. 39,1 x 28,2 cm. Artcurial. #185, 4033,
09/22/20.

OPP.49:320





Fleurs aux pétales. Paris. 1949. Color crayon on paper. 39,1 x 28,2 cm. Artcurial. #184, 4033, 09/22/20.

OPP.49:321

Fleurs aux pétales. Paris. 1949. Color crayon on paper. 39,1 x 28,2 cm. Artcurial. #184, 4033, 09/22/20.

OPP.49:322





Fleurs aux pétales. Paris. 1949. Color crayon on paper. 39,1 x 28,2 cm. Artcurial. #184, 4033, 09/22/20.

OPP.49:323

Quatre profils enlacés (III). Vallauris. 1949. Terre de faïence plate [variant of *Quatre profils enlacés*. 25 cm. Sotheby's. #87, L20162, 10/20/20.

OPP.49:326





Tête d'homme barbu. Paris. [1949]. Feather pen on duplexed book page. 18 x 11,5 cm. Sotheby's. #79, L23009, 10/10/23. Formerly Hélène Bailly Gallery.

OPP.49:327

Fragment central du plat Colombe sur lit de paille. Vallauris. 1949. Terre de faïence fragment of a platter, painted & partially glazed. 20 x 26,8 cm. Espace Tajan. #43, 2121, 03/17/21.

OPP.49:329





Colombe. Vallauris. [1949]. Ceramic plate painted with engobes & partially glazed. 31,5 x 38,5 x 4 vm. Museo Picasso, Málaga. On temporary loan from Fundación Almine & Bernard Ruiz-Picasso para el Arte.

OPP.49:331; DP.20*:149

Couverture (Dessins de Picasso. 1892 - 1948).
Paris. 1949. Reproduction of *Minotaure*. S/U. Artcurial.
#53, 4268, 10/19/22.

OPP.49:342





Faune. Vallauris. 1949. Bronze. 22,2 x 10 cm. Private collection.

OPP.49:351; PP.49:039*; WS:344.II

Oiseau mangeant un ver. Vallauris. 1949. White earthenware ceramic plate, partially engraved, with colored engobe & glaze and terracotta collage. 38 cm. Christie's. #13, 20051, 09/06-20/22.

OPP.49:353; GR.74:84





Femme (Amitiés de Montmartre). Paris. 1949.
Heliogravure on Marais paper. 15,5 x 21,9 cm.
Bonhams. #69, 29476, 05/23/24.

OPP.49:354

Quatre profils enlacés. Vallauris. 1949.
Red earthenware clay, decoration in
engobes, under glaze. 27 cm. Private
collection.

OPP.49:355; AR:89





Tête de faune. Vallauris. 1949. Cast in bronze by Godard. 41,5 x 27,5 x 15 cm. Private collection.

OPP.49:005; PP.49:036*; WS:341

Quatre profils enlacés. Vallauris. 1949. Glazed white ceramic plate, painted in colors. 270 cm. Christie's. #284, 9512, 10/31/00.

OPP.49:009; AR:87





Poisson de profil. Vallauris. 1949. White earthenware, thrown, modeled, painted with slips. 24,8 x 32,8 cm. Christie's. #0359, 1830, 05/01/07.

OPP.49:011; AR:130

Femme à la mantille. Vallauris. 1949. White earthenware, thrown, modeled, painted with slips. 47 x 11,5 x 7 cm. Musée Picasso, Paris. Dation 1979.

OPP.49:012; MPP:3695; BS.55:444p; CE.04:35; CK.04:67p; GP.96:296p; GR.74:101; HB.96*:n/a; JC.01b*:118; LB.58:114p; LE.21*:299; LO.98a*:n/a; LO.98d*:n/a; LP.99:197p; MM.98:34; RP.67b*:208; RS.88:188p; UP.00:912; WR.80*:404p





Tanagra assise. Vallauris. [1949]. White earthenware, thrown, modeled. 31 cm. Private collection.

OPP.49:013; MM.98:37

Vase-femme. Vallauris. 1949. White earthenware, thrown, modeled, painted with slip [black engobe]. 47,5 x 16,5 x 11 cm. Musée Picasso, Paris. Dation 1979.

OPP.49:014; MPP:3693; CK.04:154p; DU.94*:n/a; HB.96*:n/a; LO.98a*:n/a; LO.98d*:n/a; MA.08a*:n/a; MM.02:45p; MM.98:42; PA.21f*:137; PA.79a*:n/a; PD.09:395p; QU.04*:n/a; RP.67b*:207; TU.15*:111





Tanagra. Vallauris. 1949. White earthenware, thrown, modeled, painted with slip, glazed. 43 x 18 x 10 cm. Fundación Almine & Bernard Ruiz-Picasso para el Arte.

OPP.49:015; FE.00*:44; JR.12:291p; LO.98a*:43; MG.04b*:96; MG.04e*:n/a; MM.98:43; MR.16*:n/a

Le taureau. Vallauris. 1949 [1950] [1957]. Bronze [Cast after *Le taureau*]. 40 x 66 x 21,5 cm. Paul Rosenberg Family Collection, NY.

OPP.49:016; PP.57:171; WS:512.II; JR.10*:121p; TG.94*:117; WR.80*:434p





Colombe à la lucarne. Vallauris. 1949. Ceramic plate painted & partially glazed, edition 200. 30,5 x 37 cm. New Walk Museum and Art Gallery, Leicester. Also Christie's. #81, 2391, 04/29/01.

OPP.49:019; AR:78; PF.10*:65

Taureau attaquant. Vallauris. 1949. Terracotta medallion, edition 60. 4 cm. Christie's. #174, 9201, 09/28/01.

OPP.49:020; AR:94; B.III:7; CE.04*:316





Colombe sur lit de paille. Vallauris. 1949.
Earthenware platter, glazed, painted in black,
yellow, white & red, edition 300. 38,7 cm.
Sotheby's. #430, N07717, 11/02/01.

OPP.49:023; AR:79

Quatre profils enlacés. Vallauris. 1949.
Squared earthenware plate, glazed, painted
in black, white & green, edition 25. 26 x 26
cm. Sotheby's. #432, N07717, 11/02/01.

OPP.49:024; AR:86





Corrida en vert. Vallauris. 1949. Partially glazed ceramic plate. 36,8 cm; Edition 500. Christie's. #18, 6683, 10/09/02.

OPP.49:061; AR:81

Petite chouette. Vallauris. 1949. Partially glazed ceramic jug, edition 200. 14,5 cm. Sotheby's. #398, N07931, 10/31/03.

OPP.49:066; AR:82; CE.04*:241





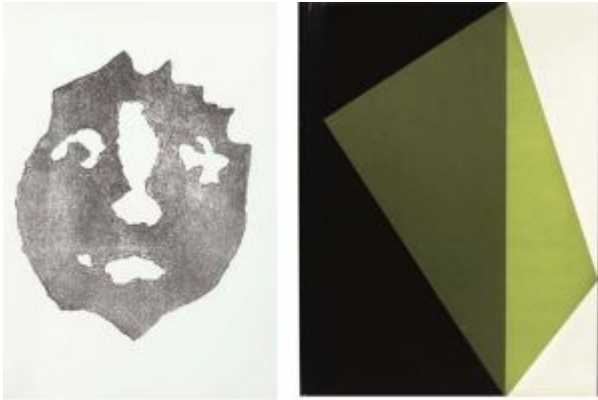
Petite chouette. Vallauris. 1949. Painted & partially glazed white earthenware pitcher, edition 200. 12,5 cm. Sotheby's. #100, W03703, 03/20/03.

OPP.49:071

Assiette aux quatre profils. Vallauris. 1949. Hand painted red terracotta plate. 25,1 cm. Hammer Galleries. 2006.

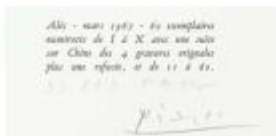
OPP.49:072





Masque tellurique. Paris. 1949. Etching. 32,6 x 25 cm. Christie's. #389, 5324, 06/09/06.

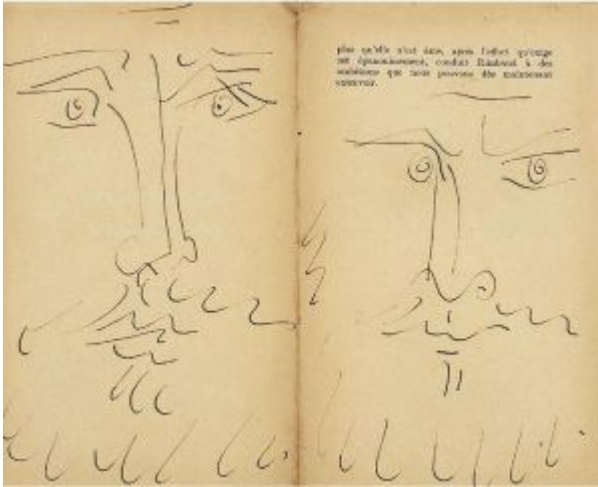
OPP.49:089



Quatre profils enlacés. Vallauris. 1949. Glazed ceramic plate, edition 35. 27 cm. Christie's. #441, 9940, 10/21/04.

OPP.49:120; AR:84





Têtes d'homme barbu. Paris. 1949. Pen & ink on paper. 17,8 x 22,3 cm. Sotheby's. #102, N08064, 01/19/05. Formerly. Sotheby's. #443, L04006, 02/04/04.

OPP.49:123

Plat ovale à la chouette. Vallauris. 1949. White earthenware clay plate, decoration painted in engobes & oxides. 32 x 38 cm. Musée Picasso, Antibes.

OPP.49:130; MPA:1949.4.29; JF.96:146p; JV.06*:194p; MM.02*:155p; ND.01*:115





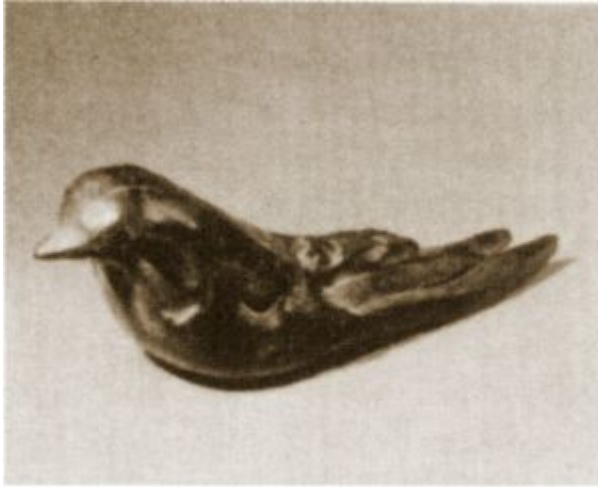
Visage de femme. Vallauris. 1949. Terracotta medallion. 4 cm. Artcurial. #20, 06/27/05.

OPP.49:151; AR:92; B.III:5; AS.89:75p; CE.04*:314

Quatre profils enlacés. Vallauris. 1949. Painted & partially glazed white earthenware plate, edition 25. 27 cm. Sotheby's. #106, W05723, 07/12/05.

OPP.49:153; AR:88; CE.04*:242





Hirondelle. Paris. 1949. Bronze. 6 x 19 x 6 cm.
Private collection.

OPP.49:161; PP.49:037*; WS:342

Centaure. Paris. 1949. Bronze. 27,5 x 16,5 cm.
Private collection.

OPP.49:162; PP.49:038*; WS:343





Aimé Césaire, Corps Perdu L024 (Ton portrait). Paris. 1949. Etching. [39,5 x 28,2] 38,5 x 28,5 cm. Christie's. #65, 5059, 04/29/04. Also Fine Arts Museums of San Francisco. (Inv 1999.165.4.24).

OPP.49:169; B.I:655; Ba:863; GC:56.24; GM.81*:272

Aimé Césaire, Corps Perdu L015 (Corps perdu). Paris. 1949. Aquatint on handmade paper, edition 219. 40,7 x 30,5 cm. Christie's. #122, 1481, 02/08/05. Also Fine Arts Museums of San Francisco. (Inv 1999.165.4.15).

OPP.49:171; B.I:646; Ba:854; GC:56.15; GM.81*:263





Médailon. Vallauris. 1949~1950. Unglazed terracotta medallion. 7,5 x 7 cm. Christie's. #341, 4232, 06/25-26/12.

OPP.49:253; AR:95; B.III:8; CE.04*:317

Picador et taureau. Vallauris. 1949~1950. Unglazed terracotta medallion, edition 100. [5] 7,5 cm. Fundació Palau, Caldes d'Estrac. (Inv 0000413). Also Christie's. #92, 5008, 04/05/06.

OPP.49:254; AR:101; B.III:14; CE.04*:323





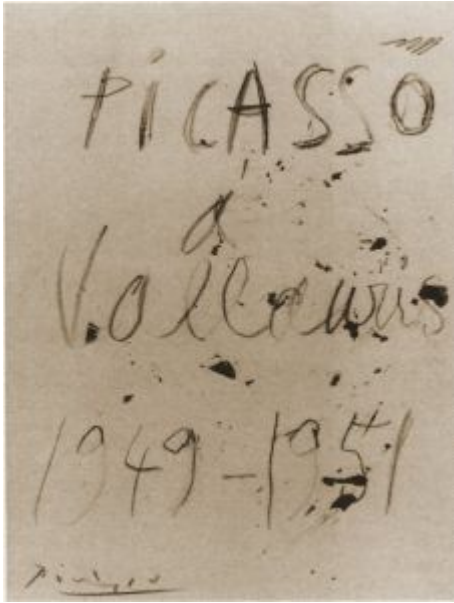
Médaille. Vallauris. 1949~1950. Unglazed terracotta medallion. 7,5 x 7 cm. Christie's. #341, 4232, 06/25-26/12.

OPP.49:257; AR:93; B.III:6; CE.04*:315

Le taureau. Paris. 1949~1950 [~1957]. Varnished wood & plaster. 40 x 66 x 21,5 cm. Marina Picasso Collection. Courtesy Galerie Jan Krugier, Geneva. Also Sotheby's. #29, L14006, 06/23/14.

OPP.49:271; WS:512.I; BR.99*:183; JC.01b*:124; MU.07a*:189; NY.89c*:25; PA.05e*:n/a; VC.05*:n/a





Verve, Picasso à Vallauris, dernière de couverture.
Vallauris. 1949~1951. Wax crayon & wash. 26 x 20,7 cm.
Private collection. Formerly Sotheby's. #184, 10/07/88.

OPP.49:167; PP.51:066a

Taureau. Paris. 1949~June/1958. Gold medallion. 2,9 cm. Christie's. #35, 5377, 06/26/14.

OPP.49:272; AR:94g

